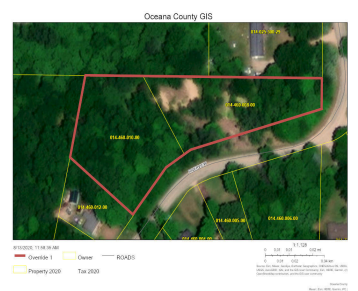


891011, RIVERVIEW, HESPERIA, MI, 49421

https://tuckerbenner.com



Gorgeous buildable 1.89 acre parcel across the street from the clean and clear White River. Rolling hills with mature trees on a freshly paved street. Located less than half of a mile from the public White River launch and the shops and restaurants of downtown Hesperia. 20 ft. easement to private launch across the street. [...]

- 0 baths
- Acreage
- Land
- Active



Basics

Category: Land

Status: Active

Lot size: 1.9 sq ft

County: Oceana

Type: Acreage

Bathrooms: 0 baths

Lot Size Acres: 1.9 acres

Amenities & Features

Utilities: None Connected, Electric Available

Waterfront Features: Deeded Access, Public Access 1 Mile or Less

Lot Features: Rolling Hills, Buildable, Wooded

Fees & Taxes

Tax Assessed Value: \$9,419

Tax Year: 2022

Tax Annual Amount: \$520

School Information

High School District: Hesperia

Miscellaneous

Road Surface Type: Paved

CrossStreet: Between M-20 and Loop Dr.

Listing Terms: Cash, Conventional

Call us now



Phone: (231)730-8781

Email: tuckerbennerteam@gmail.com

Address: 2747 Lakeshore Drive, Twin Lake, MI 49457

