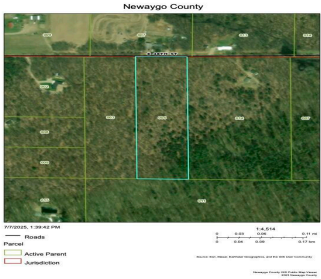
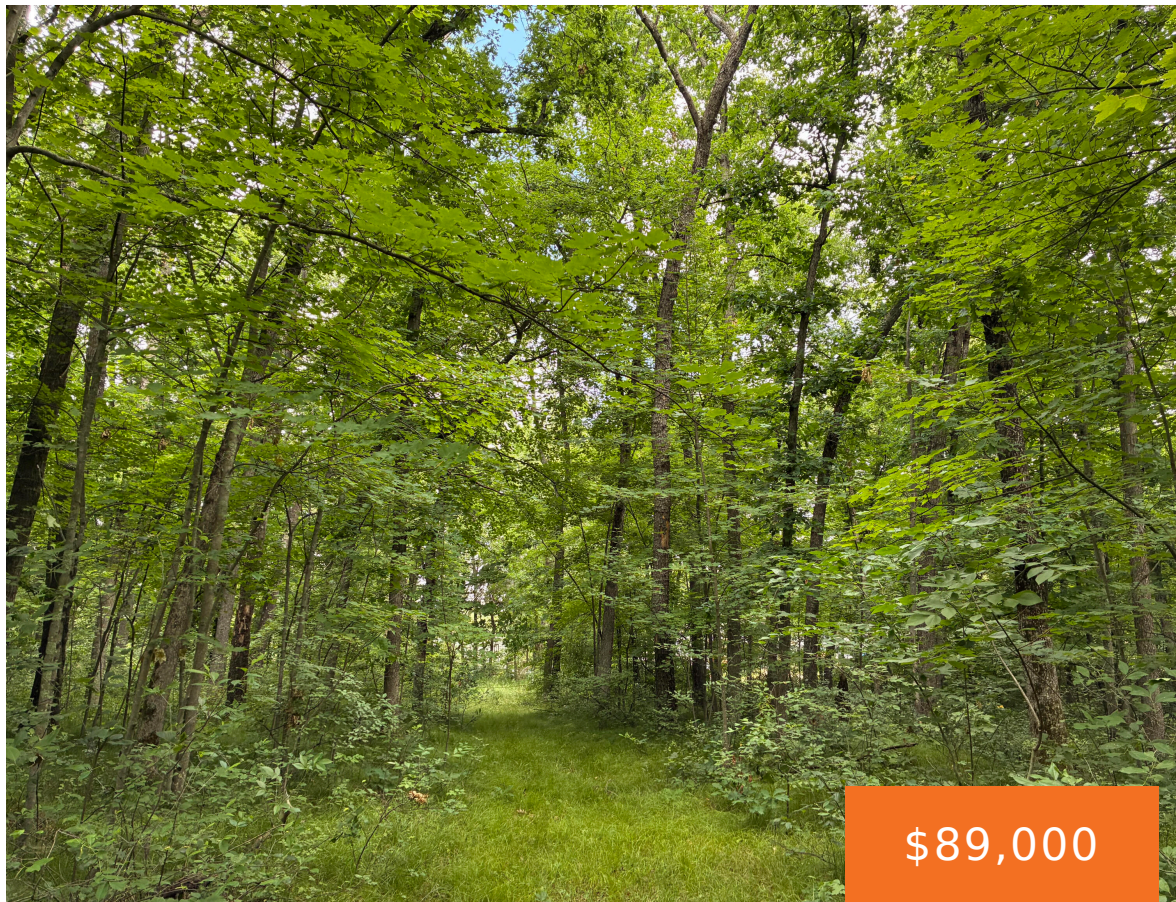


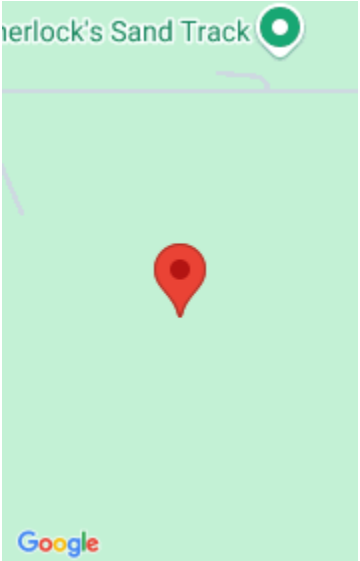
8934, 48TH, NEWAYGO, MI, 49337

https://tuckerbenner.com



Discover this beautiful 10 acre parcel in Newaygo, just minutes from Hardy Pond and the scenic Dragon Trail. This property is ideal to build your new home and or hunt the plentiful wild game. Easy commute to US-131.

- 0 baths
- Acreage
- Land
- Active



# Basics

**Category:** Land

**Status:** Active

**Lot size:** 9.83 sq ft

**County:** Newaygo

**Type:** Acreage

**Bathrooms:** 0 baths

**Lot Size Acres:** 9.83 acres

# Building Details

**Current Use:** Hunting, Farm

# Amenities & Features

**Utilities:** Electricity Available, Cable Available, None

**Lot Features:** Level, Buildable, Recreational, Tillable, Wooded

# Fees & Taxes

**Tax Assessed Value:** \$24,400

**Tax Year:** 2025

**Tax Annual Amount:** \$600

# School Information

**High School District:** Newaygo

# Miscellaneous

**CrossStreet:** S. Beech Ave

**Listing Terms:** Cash, Conventional

Call us now