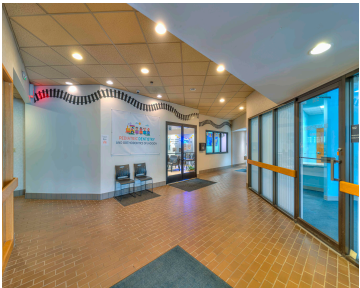


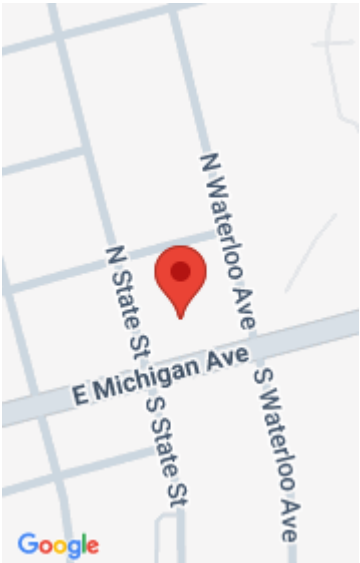
900, MICHIGAN, JACKSON, MI, 49201

https://tuckerbenner.com



Prime 15,000 SF single-story medical office building along the heavily traveled East Michigan corridor. This well-maintained, purpose-built facility offers strong tenant appeal with excellent visibility, accessibility, and proximity to Henry Ford Allegiance Health System. The property features five total units, multiple entrances, ADA-compliant access, updated mechanical systems, and ample on-site parking. Ideal for owner-occupiers or [...]

- 10 baths
- Office
- Commercial Sale
- Active



Call us now



Phone: (231)730-8781

Email: tuckerbennerteam@gmail.com

Address: 2747 Lakeshore Drive, Twin Lake, MI 49457



Basics

Category: Commercial Sale

Status: Active

Lot size: 0.95 sq ft

Bathrooms Full: 10

Business Type: Professional/Office

Type: Office

Bathrooms: 10 baths

Year built: 1986

Lot Size Acres: 0.95 acres

County: Jackson

Building Details

Building Area Total: 15000 sq ft

Construction Materials: Brick

StoriesTotal: 1

Roof: Composition

Number Of Buildings: 1

Number Of Units Total: 5

Heating: Forced Air

Building Features: Multi User Facility

Foundation Details: Slab

Amenities & Features

Inclusions: Real Estate

Utilities: Phone Available, Natural Gas Available, Electricity Available, Cable Available, Phone Connected, Natural Gas Connected, Electricity Connected, Cable Connected, Storm Sewer

Interior Features: Broadband

Cooling: Central Air

Fees & Taxes

Tax Assessed Value: \$853,509

Tax Year: 2025

Tax Annual Amount: \$59,609.73

School Information

Call us now

High School District: Jackson

Miscellaneous

Road Surface Type: Paved

CrossStreet: State & Waterloo

Listing Terms: Conventional, Cash

Call us now