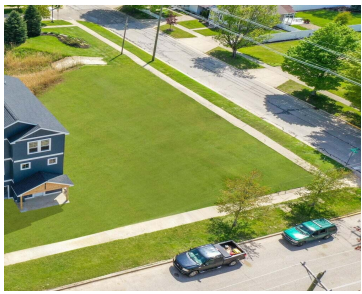


901, ST JOSEPH, SOUTH HAVEN, MI, 49090

<https://tuckerbenner.com>



The last vacant lot available in Phase 1 of the Trailside Neighborhood. This corner lot is perfectly located a block from Lake Michigan. Enjoy a relaxing bike ride to downtown South Haven or unwind poolside with the feel of Lake Michigan breezes. Only minutes from Kids Corner Park and South Beach will allow for endless [...]

- 0 baths
- Lot
- Land
- Active



Basics

Category: Land

Status: Active

Lot size: 0.07 sq ft

Lot Size Acres: 0.07 acres

Type: Lot

Bathrooms: 0 baths

Subdivision Name: Trailside

County: Van Buren

Call us now



Phone: (231)730-8781

Email: tuckerbennerteam@gmail.com

Address: 2747 Lakeshore Drive, Twin Lake, MI 49457



Building Details

Sewer: Public Sewer

Current Use: Residential

Amenities & Features

Utilities: Natural Gas Available, Electricity Available, Cable Available, Phone Available, Storm Sewer, None

WaterSource: Public

Association Amenities: Clubhouse, Pool

Lot Features: Site Condo, Buildable, Cleared, Sidewalk, Corner Lot

Fees & Taxes

Tax Assessed Value: \$1,159 **Association Fee Frequency:** Monthly

Association Fee: \$420 **Tax Year:** 2025

Tax Annual Amount: \$709.05 **Association Fee Includes:** Lawn/Yard Care, Other

School Information

High School District: South Haven

HighSchool: South Haven High School

Middle Or Junior School: Baseline Middle School

Elementary School: Lincoln Elementary School

Miscellaneous

Road Surface Type: Paved

CrossStreet: Elkenburg

Listing Terms: Cash

Call us now



Phone: (231)730-8781

Email: tuckerbennerteam@gmail.com

Address: 2747 Lakeshore Drive, Twin Lake, MI 49457

