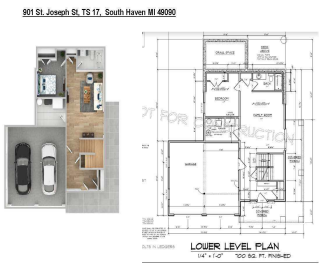


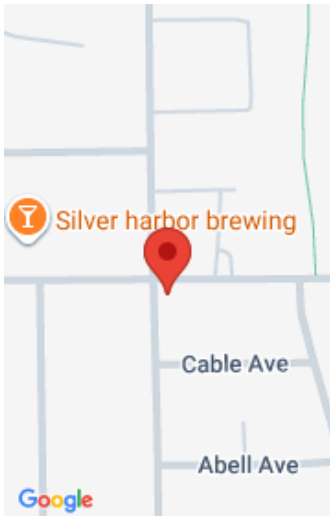
901, ST JOSEPH STREET, SOUTH HAVEN, MI, 49090

https://tuckerbenner.com



Experience luxury living in a new home just a block from Lake Michigan. You can enjoy this, sunny, proposed new True North Homes build relaxing on the wraparound porch or from the light filled interior spaces. With 5 bedrooms and 4 1/2 bathrooms, spread across nearly 3,000 square feet of elegant space everyone can find [...]

- 5 beds
- 5 baths
- Single Family Residence
- Residential
- Active
- 2913 sq ft



Call us now

Phone: (231)730-8781
Email: tuckerbennerteam@gmail.com
Address: 2747 Lakeshore Drive, Twin Lake, MI 49457

Basics

Category: Residential
Status: Active
Bathrooms: 5 baths
Lot size: 0.07 sq ft
Subdivision Name: Trailside
Lot Size Acres: 0.07 acres
County: Van Buren

Type: Single Family Residence
Bedrooms: 5 beds
Area: 2913 sq ft
Year built: 2025
Bathrooms Full: 4
Rooms Total: 15
Bathrooms Half: 1

Building Details

Building Area Total: 2200 sq ft
Architectural Style: Other
Heating: Forced Air
Roof: Composition

Construction Materials: Other
Sewer: Public Sewer
Stories: 3
Basement: Slab

Amenities & Features

Laundry Features: Laundry Room, Sink, Upper Level, Washer Hookup

Association Amenities: Clubhouse, Pool, Other

Waterfront Features: Lake

Garage Spaces: 2

Appliances: Washer, Refrigerator, Range, Oven, Microwave, Dryer, Dishwasher

Lot Features: Corner Lot, Level, Sidewalk

Exterior Features: Balcony, Porch(es), Deck(s)

Cooling: SEER 13 or Greater, Central Air

Utilities: Phone Available, Natural Gas Available, Electricity Available, Cable Available, Storm Sewer, Public Water, Public Sewer, Broadband

Parking Features: Garage Faces Front, Garage Door Opener, Attached

Fireplace Features: Gas Log, Living Room

WaterSource: Public

Interior Features: Ceiling Fan(s), Ceramic Floor, Garage Door Opener, Wet Bar, Wood Floor, Kitchen Island, Pantry

Window Features: Screens, Insulated Windows

Fireplaces Total: 1

Call us now

Fees & Taxes

Tax Assessed Value: \$10,710 **Association Fee Frequency:** Monthly
Association Fee: \$420 **Tax Year:** 2024
Tax Annual Amount: \$718.44 **Association Fee Includes:** Other, Trash, Snow Removal, Lawn/Yard Care

School Information

High School District: South Haven **HighSchool:** L.C. Mohr
Middle Or Junior School: Baseline **Elementary School:** Lincoln

Miscellaneous

Road Surface Type: Paved **CrossStreet:** Elkenburg
Listing Terms: Cash, Conventional

Call us now