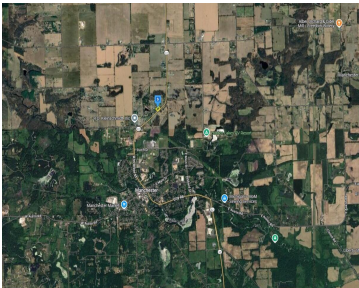
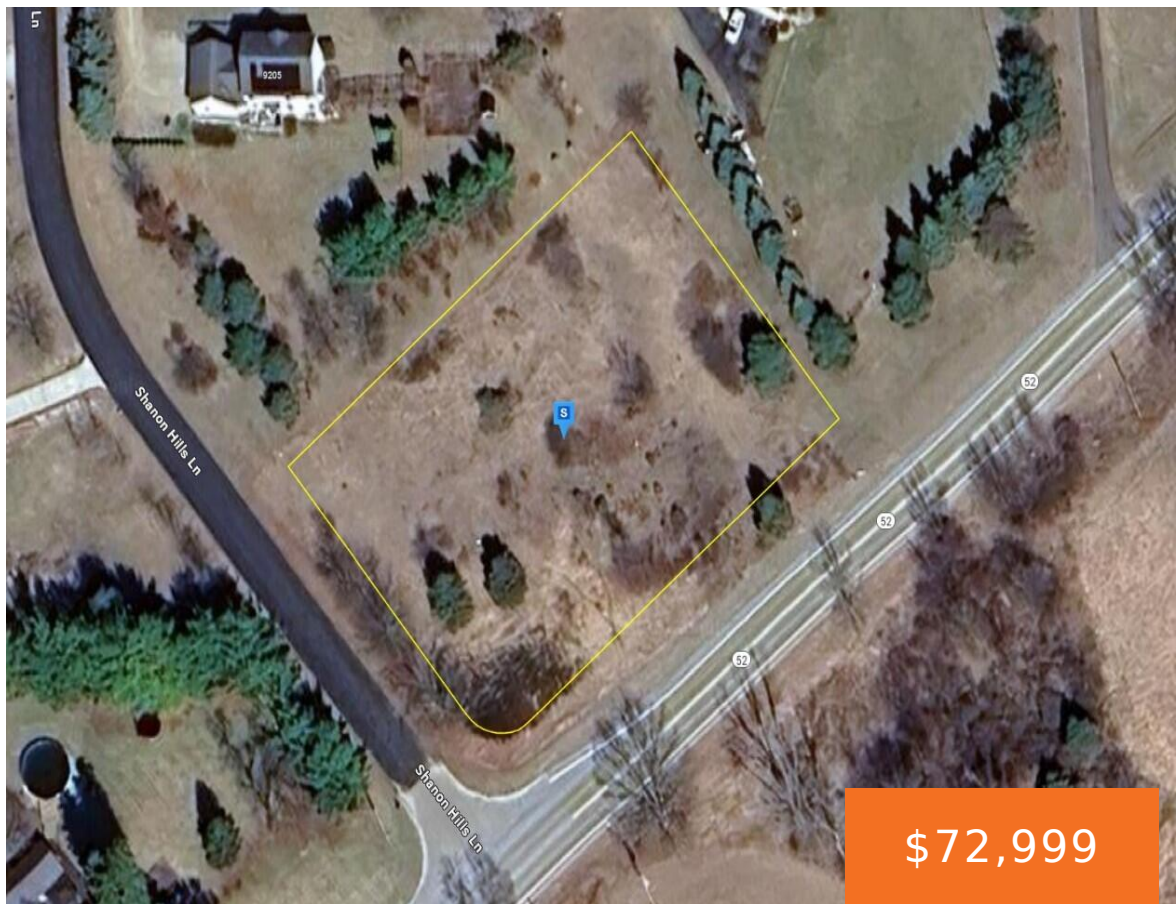


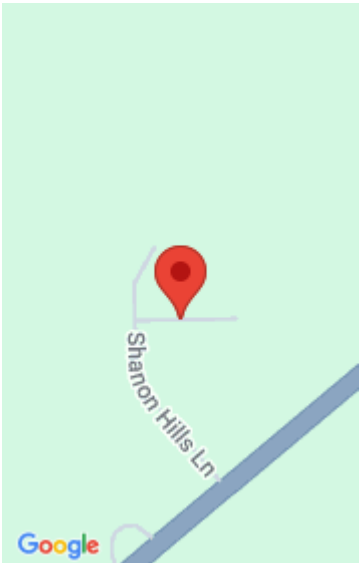
9201, SHARON HILLS, MANCHESTER, MI, 48158

<https://tuckerbenner.com>



This spacious, partially wooded 1-acre corner lot in Sharon Hills Estates offers an excellent opportunity to build your custom home or invest in a prime Washtenaw County location. Well and septic are required, with gas and electric available at the road, providing flexibility for development. Enjoy a peaceful, rural setting while staying conveniently connected to [...]

- 0 baths
- Lot
- Land
- Active



Call us now

Phone: (231)730-8781
Email: tuckerbennerteam@gmail.com
Address: 2747 Lakeshore Drive, Twin Lake, MI 49457

Basics

Category: Land

Status: Active

Lot size: 1.03 sq ft

Lot Size Acres: 1.03 acres

Type: Lot

Bathrooms: 0 baths

Subdivision Name: Sharon Hills Estate

County: Washtenaw

Amenities & Features

Utilities: Natural Gas Available, Electricity Available, Natural Gas Connected, Electricity Connected

Lot Features: Corner Lot

Fees & Taxes

Tax Assessed Value: \$9,526

Tax Year: 2025

Tax Annual Amount: \$281

School Information

High School District: Manchester

HighSchool: Manchester Junior and Senior High School

Middle Or Junior School: Manchester Junior and Senior High School

Elementary School: Riverside Intermediate School

Miscellaneous

CrossStreet: Queens Dr

Listing Terms: Cash, Conventional

Call us now