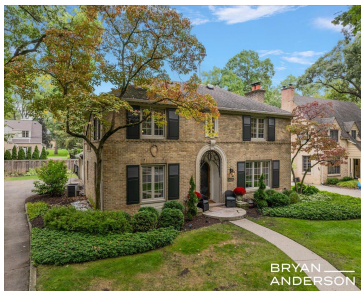


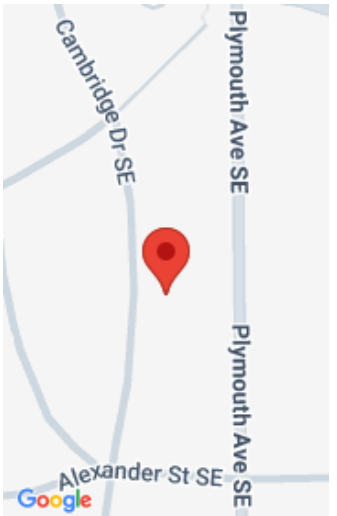
926, CAMBRIDGE, EAST GRAND RAPIDS, MI, 49506

https://tuckerbenner.com



Welcome to 926 Cambridge in East Grand Rapids! This exquisite historic residence, thoughtfully renovated by Whitmore Custom Homes, perfectly blends modern comfort with timeless Mediterranean charm. Spanning an impressive 3866 square feet, this home features six spacious bedrooms and four full bathrooms. As you step inside, you'll be greeted by a stunning foyer adorned with [...]

- 6 beds
- 4 baths
- Single Family Residence
- Residential
- Active
- 3866 sq ft



Basics

Category: Residential

Status: Active

Bathrooms: 4 baths

Lot size: 0.24 sq ft

Bathrooms Full: 4

Rooms Total: 13

Type: Single Family Residence

Bedrooms: 6 beds

Area: 3866 sq ft

Year built: 1929

Lot Size Acres: 0.24 acres

County: Kent

Building Details

Building Area Total: 2825 sq ft

Architectural Style: Traditional

Heating: Forced Air

Roof: Shingle

Construction Materials: Brick

Sewer: Public

Stories: 2

Basement: Full

Amenities & Features

Laundry Features: In Basement, Upper Level

Fencing: Fenced Back

Fireplace Features: Living Room

WaterSource: Public

Interior Features: Center Island

Fireplaces Total: 1

Flooring: Wood

Parking Features: Attached

Garage Spaces: 2

Appliances: Dishwasher, Double Oven, Dryer, Range, Refrigerator

Patio And Porch Features: Patio

Cooling: Central Air

Fees & Taxes

Tax Assessed Value: \$456,529

Tax Year: 2025

Tax Annual Amount: \$21,655

Call us now



School Information

High School District: East Grand Rapids **Elementary School:** Wealthy School

Miscellaneous

CrossStreet: MLK Jr Street **Listing Terms:** Cash, VA Loan, Conventional

Call us now