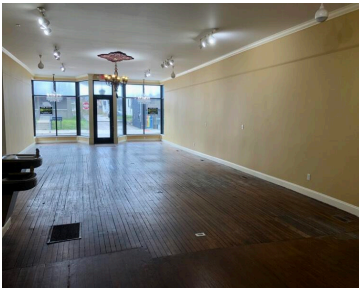
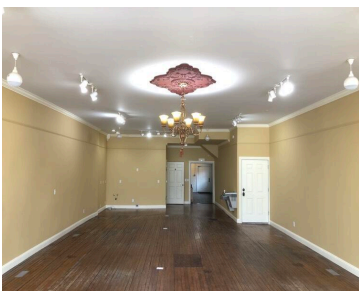


929, FULTON, GRAND RAPIDS, MI, 49503
<https://tuckerbenner.com>



Completely refurbished historic building in the heart of Uptown with a visible location on high traffic count Fulton St. Totally renovated while retaining its historical charm and character and original floors. 1600 sq ft Main floor features over 1000 sq ft of unobstructed space with large front display windows plus finished back room with rear [...]

- 1 bath
- Retail/Commercial
- Commercial Sale
- Active



Basics



Call us now

Phone: (231)730-8781
Email: tuckerbennerteam@gmail.com
Address: 2747 Lakeshore Drive, Twin Lake, MI 49457



Category: Commercial Sale **Type:** Retail/Commercial
Status: Active **Bathrooms:** 1 bath
Lot size: 0.1 sq ft **Year built:** 1910
Subdivision Name: n.a. **Bathrooms Full:** 1
Lot Size Acres: 0.1 acres **Business Type:** Other, Professional/Office, Professional Service, Restaurant, Retail
County: Kent

Building Details

Building Area Total: 2782 sq ft **Number Of Units Total:** 2
Construction Materials: Wood Siding **Sewer:** Public Sewer
StoriesTotal: 3127 **Building Features:** Bath Common Area
Roof: Composition, Rubber **Foundation Details:** Block
Number Of Buildings: 1

Amenities & Features

Parking Total: 5 **Inclusions:** 1, 1
Utilities: Phone Available, Public Water Available, Public Sewer Available, Natural Gas Available, Electric Available, Cable Available, Broadband Available, Phone Connected, Natural Gas Connected, Electric Connected, Cable Connected
Parking Features: Paved
WaterSource: Public **Fireplaces Total:** 1
Cooling: Central Air

Fees & Taxes

Tax Assessed Value: \$90,355 **Tax Year:** 2023
Tax Annual Amount: \$4,500



Call us now

Phone: (231)730-8781
Email: tuckerbennerteam@gmail.com
Address: 2747 Lakeshore Drive, Twin Lake, MI 49457



School Information

High School District: Grand Rapids

Miscellaneous

Road Surface Type: Paved

CrossStreet: W of Fuller

Listing Terms: Cash



Call us now

Phone: (231)730-8781

Email: tuckerbennerteam@gmail.com

Address: 2747 Lakeshore Drive, Twin Lake, MI 49457

