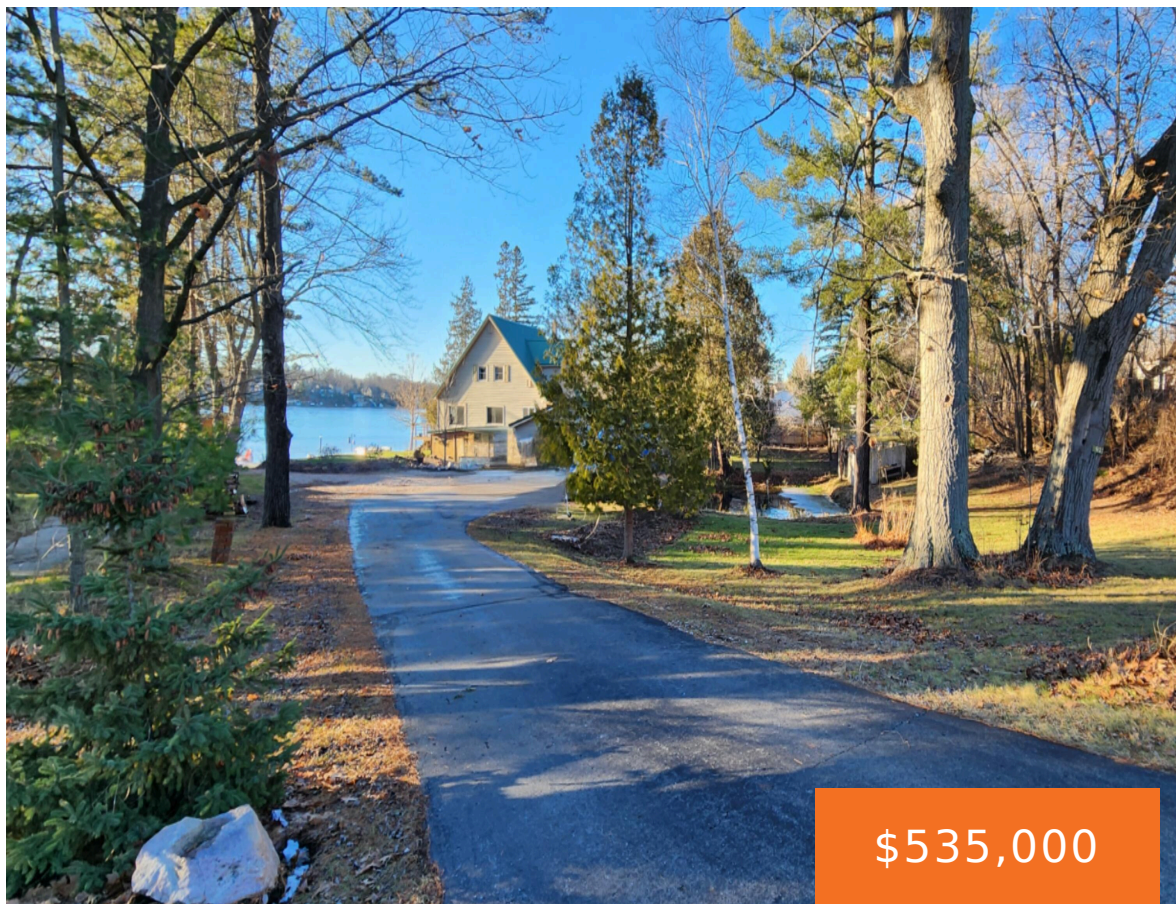


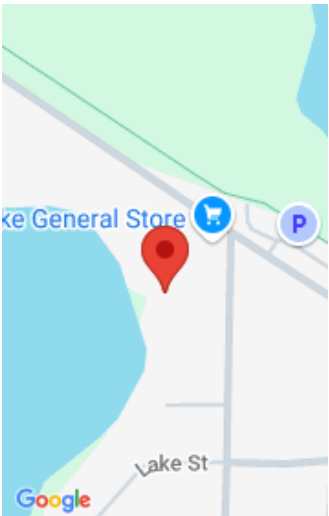
9318, SCHOOL, LAKE, MI, 48632

https://tuckerbenner.com



Come and see this beautiful, quintessential Lakehouse and return to a simpler time. Built in 1932 on almost an acre with 92ft of gently sloping waterfront , you can picture the nostalgic picnics after wars and weddings. The spacious lot has fruit trees, grape vines, beautiful perennials, an aerated fishpond, sandy beach, new natural seawall [...]

- 6 beds
- 2 baths
- Single Family Residence
- Residential
- Active
- 2402 sq ft



Call us now

Phone: (231)730-8781  
Email: tuckerbennerteam@gmail.com  
Address: 2747 Lakeshore Drive, Twin Lake, MI 49457

# Basics

<b>Category:</b> Residential	<b>Type:</b> Single Family Residence
<b>Status:</b> Active	<b>Bedrooms:</b> 6 beds
<b>Bathrooms:</b> 2 baths	<b>Area:</b> 2402 sq ft
<b>Lot size:</b> 0.8 sq ft	<b>Year built:</b> 1932
<b>Bathrooms Full:</b> 2	<b>Lot Size Acres:</b> 0.8 acres
<b>Rooms Total:</b> 13	<b>County:</b> Clare

# Building Details

<b>Building Area Total:</b> 2402 sq ft	<b>Construction Materials:</b> Vinyl Siding
<b>Architectural Style:</b> Traditional	<b>Sewer:</b> Septic Tank
<b>Heating:</b> Baseboard, Hot Water, Radiant	<b>Stories:</b> 2
<b>Basement:</b> Full, Michigan Basement, Walk-Out Access	

# Amenities & Features

<b>Laundry Features:</b> In Basement, Main Level	<b>Utilities:</b> Phone Available, Natural Gas Available, Electricity Available, Cable Available, Phone Connected, Natural Gas Connected, Cable Connected, Broadband, High-Speed Internet
<b>Parking Features:</b> Garage Door Opener, Detached	<b>Waterfront Features:</b> Lake
<b>Garage Spaces:</b> 2	<b>WaterSource:</b> Well
<b>Appliances:</b> Washer, Refrigerator, Range, Dryer, Dishwasher	<b>Interior Features:</b> Ceiling Fan(s), Garage Door Opener, Water Softener/Rented, Wood Floor, Kitchen Island
<b>Lot Features:</b> Level	<b>Window Features:</b> Replacement
<b>Exterior Features:</b> Fenced Back, Porch(es), Patio, Deck(s)	<b>Cooling:</b> Wall Unit(s)

## Call us now



## Fees & Taxes

**Tax Assessed Value:** \$141,465  
**Tax Annual Amount:** \$3,874

**Tax Year:** 2024



## School Information

**High School District:** Farwell



## Miscellaneous

**Road Surface Type:** Paved  
**CrossStreet:** Mystic Lake Dr and School St  
**Listing Terms:** Cash, FHA, VA Loan, Conventional

**Call us now**