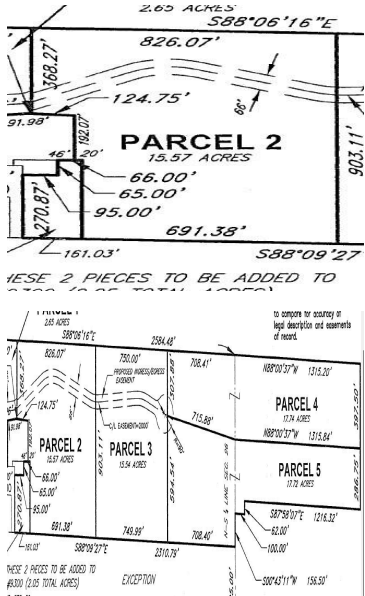


93402, SPARTA, SPARTA, MI, 49345

https://tuckerbenner.com



Check out this Skyline View! 15.57 Acres of Rolling land on private drive. Overlooking surrounding area. Easy access to Sparta Ave. Excavation working is being completed over the next few months.

- 0 baths
- Acreage
- Land
- Active



# Basics

**Category:** Land

**Status:** Active

**Lot size:** 15.57 sq ft

**County:** Kent

**Type:** Acreage

**Bathrooms:** 0 baths

**Lot Size Acres:** 15.57 acres

# Building Details

**Current Use:** Agricultural

# Amenities & Features

**Utilities:** None

**Lot Features:** Rolling Hills, Cleared, Cul-De-Sac, Tillable

# Fees & Taxes

**Tax Assessed Value:** \$1

**Tax Annual Amount:** \$1

**Tax Year:** 2024

# School Information

**High School District:** Sparta

# Miscellaneous

**Road Surface Type:** Unimproved

**Listing Terms:** Cash, Conventional

**CrossStreet:** 11/12 Mile Rd

Call us now