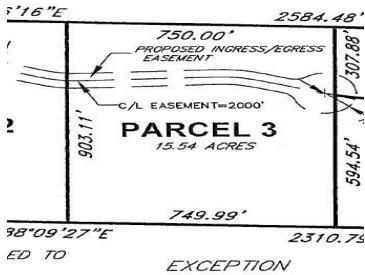


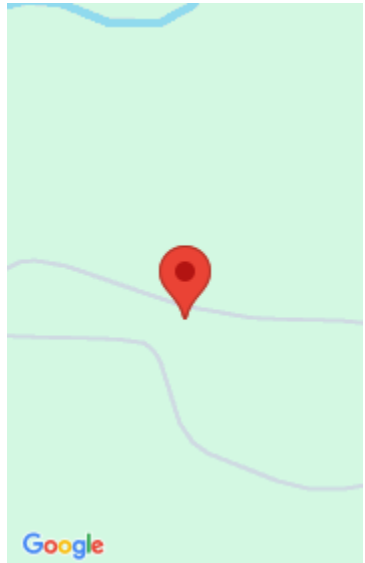
93403, SPARTA, SPARTA, MI, 49345

https://tuckerbenner.com



Country Setting with awesome view and rolling hills, 15.54 Acres site overlooking the surrounding area. Easy access to Sparta Ave and M 37. Excavation work being completed over the next few months, top soil being pushed back.

- 0 baths
- Acreage
- Land
- Active



# Basics

**Category:** Land

**Status:** Active

**Lot size:** 15.54 sq ft

**County:** Kent

**Type:** Acreage

**Bathrooms:** 0 baths

**Lot Size Acres:** 15.54 acres

# Building Details

**Current Use:** Agricultural

# Amenities & Features

**Utilities:** Electricity Available, None **Lot Features:** Rolling Hills, Cleared, Cul-De-Sac, Tillable

# Fees & Taxes

**Tax Assessed Value:** \$1

**Tax Annual Amount:** \$1

**Tax Year:** 2024

# School Information

**High School District:** Sparta

# Miscellaneous

**Road Surface Type:** Unimproved

**Listing Terms:** Cash, Conventional

**CrossStreet:** 11 & 12 Mile Rd

Call us now