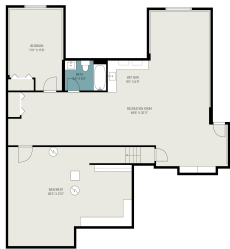


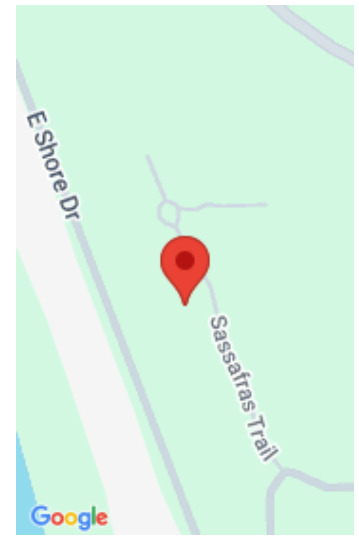
9340, SASSAFRAS, PORTAGE, MI, 49002

https://tuckerbenner.com



Discover this rare opportunity in The Woodlands at Austin Lake—this stand-alone condo is beautifully maintained and meticulously finished. Built in 2020 with a 5-Star Energy Star rating, this home promises low energy costs and is tucked in a setting that feels private, peaceful, and inviting. The heart of the home is the expansive kitchen, featuring [...]

- 3 beds
- 3 baths
- Condominium
- Residential
- Active
- 3300 sq ft



Basics

Category: Residential

Status: Active

Bathrooms: 3 baths

Lot size: 0 sq ft

Bathrooms Full: 3

Rooms Total: 7

Type: Condominium

Bedrooms: 3 beds

Area: 3300 sq ft

Year built: 2020

Lot Size Acres: 0 acres

County: Kalamazoo

Building Details

Building Area Total: 2058 sq ft

Architectural Style: Ranch

Heating: Forced Air

Roof: Composition

Construction Materials: Vinyl Siding

Sewer: Public

Stories: 2

Basement: Daylight, Full

Amenities & Features

Laundry Features: Laundry Room, Main Level, Sink

Fencing: Invisible Fence

Fireplace Features: Gas Log, Living Room

WaterSource: Public

Interior Features: Ceiling Fan(s), Broadband, Garage Door Opener, Center Island, Eat-in Kitchen, Pantry

Patio And Porch Features: Deck, Porch(es)

Cooling: Central Air, SEER 13 or Greater

Utilities: Phone Available, Natural Gas Available, Electricity Available, Cable Available, Natural Gas Connected, Storm Sewer

Parking Features: Garage Door Opener, Attached

Garage Spaces: 2

Appliances: Bar Fridge, Dishwasher, Disposal, Dryer, Microwave, Oven, Range, Refrigerator, Washer

Window Features: Low-Emissivity Windows, Screens, Insulated Windows

Fireplaces Total: 1

Call us now

Fees & Taxes

Tax Assessed Value: \$209,120

Association Fee: \$1,035

Association Fee Includes: Trash, Snow Removal,
Lawn/Yard Care

Association Fee Frequency:
Quarterly

Tax Year: 2025

School Information

High School District: Portage

Miscellaneous

Road Surface Type: Paved

Listing Terms: Cash, VA Loan, Conventional

CrossStreet: The Woodlands Trail

Call us now

Phone: (231)730-8781

Email: tuckerbennerteam@gmail.com

Address: 2747 Lakeshore Drive, Twin Lake, MI 49457