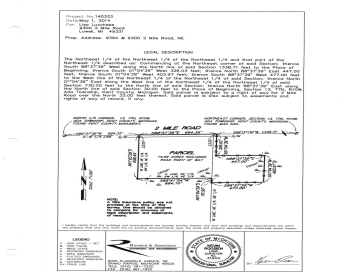
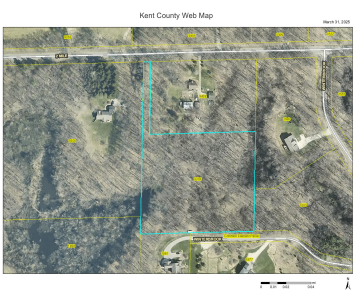


9394, 2 MILE, LOWELL, MI, 49331
https://tuckerbenner.com



Hard to find rural building site on 4.6 acres in Ada Township. Mature trees, slightly rolling terrain and small, natural pond. Convenient location just minutes from both downtown Ada and Lowell. Any future construction access is off 2 Mile Rd only.

- 0 baths
- Acreage
- Land
- Active



Basics

Category: Land

Status: Active

Lot size: 4.64 sq ft

County: Kent

Type: Acreage

Bathrooms: 0 baths

Lot Size Acres: 4.64 acres

Amenities & Features

Utilities: Natural Gas Available, Electricity Available, None

Waterfront Features: Pond

Lot Features: Rolling Hills, Buildable, Wooded

Fees & Taxes

Tax Assessed Value: \$37,383

Tax Year: 2025

Tax Annual Amount: \$1,181

School Information

High School District: Lowell

Miscellaneous

Road Surface Type: Paved

CrossStreet: McCabe

Listing Terms: Cash, Conventional

Call us now