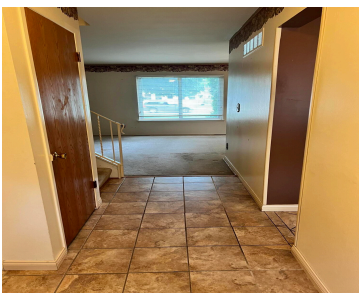


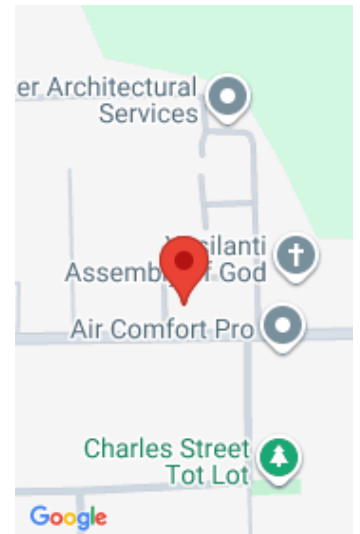
941, TERRACE, YPSILANTI, MI, 48198

https://tuckerbenner.com



Here it is, once in a blue moon for a 3-bedroom, 1.5-bath townhome to come on the market in this community! This is an interior unit located to the back of the development with a private entrance to the unit and the courtyard. The basement features glass block windows and is partially finished for additional [...]

- 3 beds
- 2 baths
- Condominium
- Residential
- Active
- 1576 sq ft



Call us now

Basics

Category: Residential
Status: Active
Bathrooms: 2 baths
Lot size: 0.02 sq ft
Subdivision Name: Terrace Park Condominiums
Lot Size Acres: 0.02 acres
County: Washtenaw

Type: Condominium
Bedrooms: 3 beds
Area: 1576 sq ft
Year built: 1968
Bathrooms Full: 1
Rooms Total: 7
Bathrooms Half: 1

Building Details

Building Area Total: 1276 sq ft
Architectural Style: Colonial
Heating: Forced Air
Roof: Asphalt

Construction Materials: Brick, Other
Sewer: Public
Stories: 2
Basement: Full

Amenities & Features

Laundry Features: In Basement, Sink
Utilities: Cable Available, Natural Gas Connected
WaterSource: Public

Interior Features: Ceiling Fan(s), Eat-in Kitchen
Patio And Porch Features: Porch(es)

Flooring: Carpet, Other, Tile
Fencing: Front Yard, Privacy

Appliances: Dishwasher, Dryer, Oven, Refrigerator, Washer
Window Features: Insulated Windows, Window Treatments
Cooling: Central Air

Fees & Taxes

Call us now

Tax Assessed Value: \$24,899

Association Fee Frequency: Monthly

Association Fee: \$230

Tax Year: 2025

Tax Annual Amount: \$1,192

Association Fee Includes: Snow Removal, Lawn/Yard Care

School Information

High School District: Ypsilanti

Miscellaneous

Road Surface Type: Paved

CrossStreet: N Prospect Rd and Holmes

Listing Terms: Cash, Conventional

Call us now