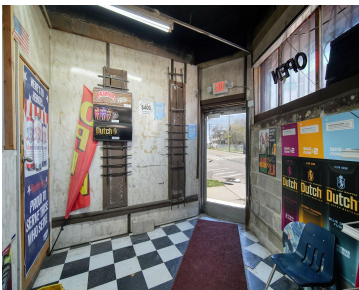


9606, SHOEMAKER, DETROIT, MI, 48213

<https://tuckerbenner.com>



Prime Commercial Building with Business Opportunity in the Gratiot Town/Kettering neighborhood of Detroit, MI. An exceptional opportunity awaits you within this thriving community of Detroit .This Solid two-story building offering a blend of retail space and residential accommodations. Boasting 2,878 square feet of floor space on the first level, currently utilized as a retail business, [...]

- 2 baths
- Retail/Commercial
- Commercial Sale
- Active



Basics



Call us now

Phone: (231)730-8781
Email: tuckerbennerteam@gmail.com
Address: 2747 Lakeshore Drive, Twin Lake, MI 49457



Category: Commercial Sale

Status: Active

Lot size: 0.06 sq ft

Bathrooms Full: 2

Business Name: Crazy Daisy's Market

County: Wayne

Type: Retail/Commercial

Bathrooms: 2 baths

Year built: 1959

Lot Size Acres: 0.06 acres

Business Type: Other, Professional/Office, Professional Service, Restaurant, Bar/Tavern/Lounge, Storage, Retail

Building Details

Building Area Total: 3588 sq ft

Construction Materials: Brick, Block

StoriesTotal: 2878

Foundation Details: Block

Number Of Units Total: 2

Sewer: Public Sewer

Roof: Rubber

Number Of Buildings: 1

Amenities & Features

Inclusions: 1, 1, 1, 1

Utilities: Cable Available, Phone Connected, Natural Gas Connected, Electric Connected

Parking Features: Concrete, Driveway **WaterSource:** Public

Fireplaces Total: 1

Fees & Taxes

Tax Assessed Value: \$24,318

Tax Year: 2023

Tax Annual Amount: \$2,613

School Information

High School District: Detroit



Call us now

Phone: (231)730-8781

Email: tuckerbennerteam@gmail.com

Address: 2747 Lakeshore Drive, Twin Lake, MI 49457



Miscellaneous

Road Surface Type: Paved

CrossStreet: Cooper and Pennsylvania

Listing Terms: Conventional, Cash

Tenant Pays: Electricity, Gas, Sewer, Trash Collection, Water



Call us now

Phone: (231)730-8781

Email: tuckerbennerteam@gmail.com

Address: 2747 Lakeshore Drive, Twin Lake, MI 49457

