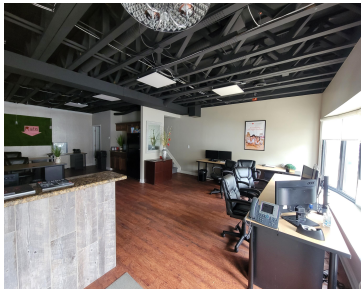


# 963, ANN ARBOR, PLYMOUTH, MI, 48170

<https://tuckerbenner.com>



Discover this recently renovated, two-story office space now available for lease in the heart of downtown Plymouth. Ideal for office, service, or small retail businesses seeking the convenience of a walkable downtown area, combined with effortless access to a friendly small-town atmosphere. This building is conveniently surrounded by ample parking, retail shops, and a plethora [...]

- 0 baths
- Office
- Commercial Lease
- Active



## Basics

**Category:** Commercial Lease  
**Status:** Active  
**Lot size:** 0.42 sq ft  
**Lot Size Acres:** 0.42 acres  
**County:** Wayne

**Type:** Office  
**Bathrooms:** 0 baths  
**Year built:** 1978  
**Business Type:** Professional/Office



### Call us now

Phone: (231)730-8781  
 Email: [tuckerbennerteam@gmail.com](mailto:tuckerbennerteam@gmail.com)  
 Address: 2747 Lakeshore Drive, Twin Lake, MI 49457



---

## Building Details

**Building Area Total:** 1400 sq ft

**Sewer:** Public Sewer

**Foundation Details:** Slab

**Construction Materials:** Brick

**Heating:** Forced Air

**Number Of Buildings:** 1

---

## Amenities & Features

**Utilities:** Phone Available, Natural Gas Available, Electricity Available, Cable Available, Natural Gas Connected, Electricity Connected, Water Available, Sewer Available

**Fireplaces Total:** 1

**WaterSource:** Public

**Cooling:** Central Air

---

## Fees & Taxes

**Tax Assessed Value:** \$569,260

**Tax Year:** 2024

---

## School Information

**High School District:** Plymouth-Canton

---

## Miscellaneous

**CrossStreet:** Ann Arbor Trail

**Tenant Pays:** Electricity, Water, Sewer, Gas



### Call us now

Phone: (231)730-8781

Email: tuckerbennerteam@gmail.com

Address: 2747 Lakeshore Drive, Twin Lake, MI 49457

