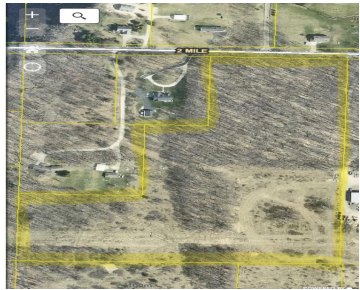


9690, 2 MILE RD, LOWELL, MI, 49331

https://tuckerbenner.com



Discover the perfect blend of seclusion and convenience with this stunning 21-acre wooded parcel located just minutes from Lowell and Ada in Vergennes township. Whether you’re looking to build your dream home tucked among the trees or seeking prime hunting land, this property offers endless possibilities. Enjoy the peace and beauty of nature without sacrificing [...]

- 0 baths
- Acreage
- Land
- Active



---

# Basics

**Category:** Land

**Status:** Active

**Lot size:** 21.14 sq ft

**County:** Kent

**Type:** Acreage

**Bathrooms:** 0 baths

**Lot Size Acres:** 21.14 acres

---

# Amenities & Features

**Utilities:** Natural Gas Available, Electricity Available, None

---

# Fees & Taxes

**Tax Assessed Value:** \$49,945

**Tax Annual Amount:** \$230,539

**Tax Year:** 2025

---

# School Information

**High School District:** Lowell

---

# Miscellaneous

**CrossStreet:** McCabe Ave and Parnell Ave

**Listing Terms:** Cash, Conventional

**Call us now**