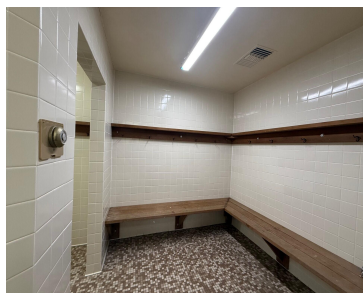


98, HARBOR, LUDINGTON, MI, 49431

https://tuckerbenner.com



Enjoy hassle-free boating with this 40-foot boat slip (14' wide) in the protected basin of Crosswinds Marina on beautiful Pere Marquette Lake. Complete with electric, water, a dock box, and association-paid Wi-Fi, this slip offers everything you need for a convenient day on the water. Marina amenities include a spacious bathhouse with showers, a private [...]

- 0 baths
- Dockominium
- Land
- Active

Basics

Category: Land

Status: Active

Lot Size Acres: 0 acres

Type: Dockominium

Bathrooms: 0 baths

County: Mason

Building Details

Call us now

Phone: (231)730-8781
 Email: tuckerbennerteam@gmail.com
 Address: 2747 Lakeshore Drive, Twin Lake, MI 49457



Current Use: Recreational

Amenities & Features

Utilities: Electricity Available, Electricity Connected

Association Amenities: Pets Allowed, Boat Launch, Other

Waterfront Features: Channel, Lake

WaterSource: Public

Lot Features: Level, Site Condo, Recreational, Sidewalk

Fees & Taxes

Tax Assessed Value: \$5,258

Association Fee Frequency: Monthly

Association Fee: \$105

Tax Year: 2025

Tax Annual Amount: \$308

Association Fee Includes: Electricity, Water

School Information

High School District: Ludington

Miscellaneous

Road Surface Type: Paved

CrossStreet: Lakeshore Drive

Listing Terms: Cash, Conventional

Call us now



Phone: (231)730-8781

Email: tuckerbennerteam@gmail.com

Address: 2747 Lakeshore Drive, Twin Lake, MI 49457

