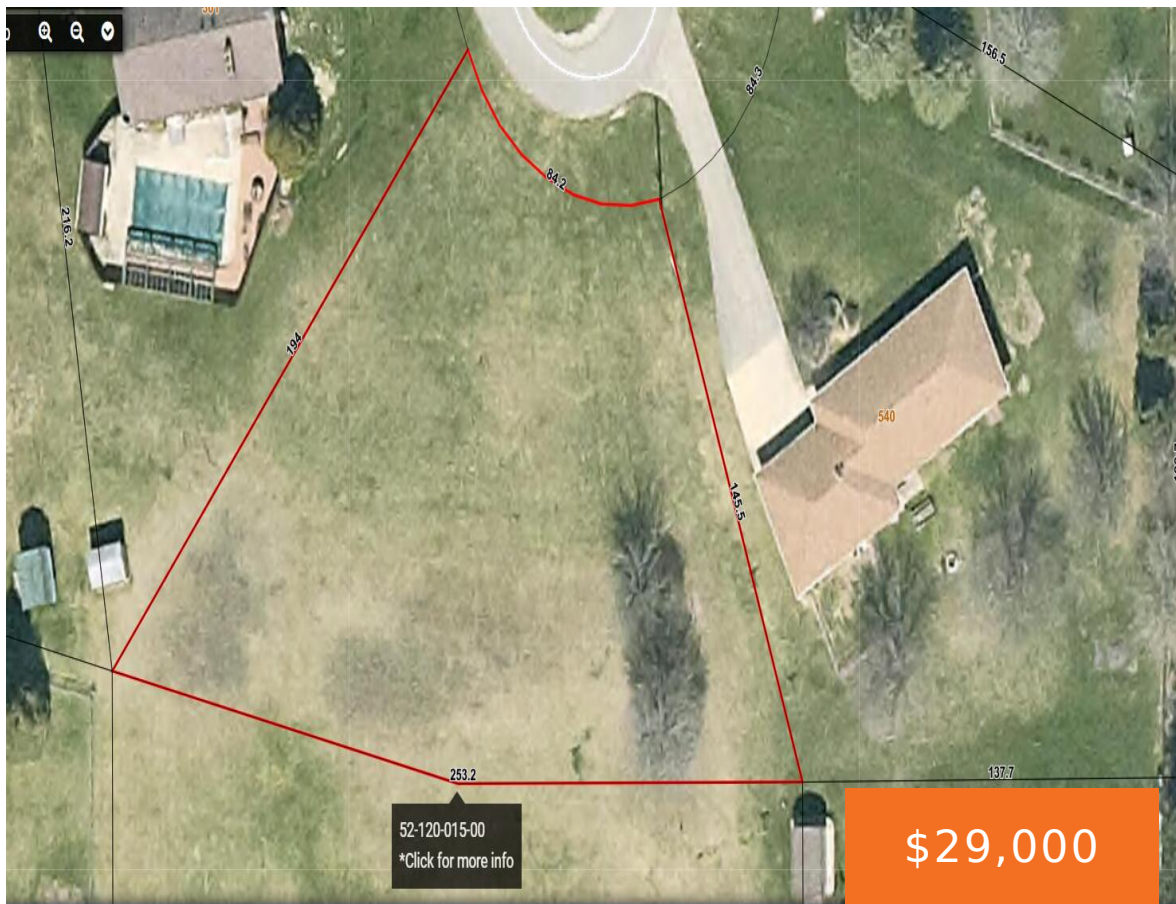


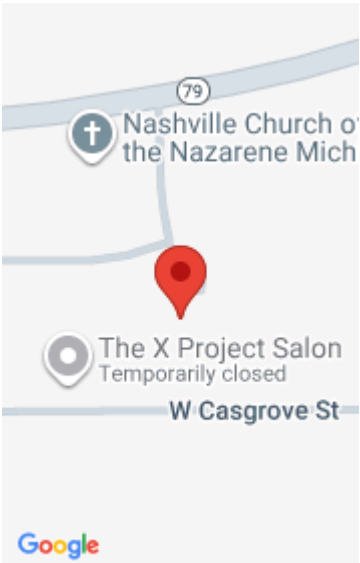
CHAPEL, NASHVILLE, MI, 49073

<https://tuckerbenner.com>




Come build your dream home in the desirable Fuller Heights neighborhood! This beautiful lot is tucked into a cul-de-sac, with an ample amount of space, mature trees, and abundant potential. Conveniently located near school grounds, and is close to town, where you will find local taverns, cafés, pizza, and the famous Moo-Ville Creamery for delicious [...]

- 0 baths
- Lot
- Land
- Active




Call us now



Phone: (231)730-8781

Email: tuckerbennerteam@gmail.com

Address: 2747 Lakeshore Drive, Twin Lake, MI 49457



Basics

Category: Land

Status: Active

Lot size: 0.56 sq ft

County: Barry

Type: Lot

Bathrooms: 0 baths

Lot Size Acres: 0.56 acres

Amenities & Features

Utilities: Natural Gas Available, Electricity Available, Natural Gas Connected, Storm Sewer, Electricity Connected

Lot Features: Buildable, Cul-De-Sac

Fees & Taxes

Tax Assessed Value: \$5,731

Tax Year: 2025

Tax Annual Amount: \$336.72

School Information

High School District: Maple Valley

Miscellaneous

Road Surface Type: Paved

CrossStreet: Center Court

Listing Terms: Cash, Conventional

Call us now