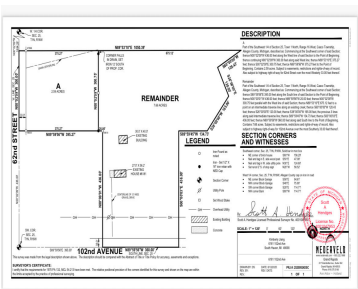


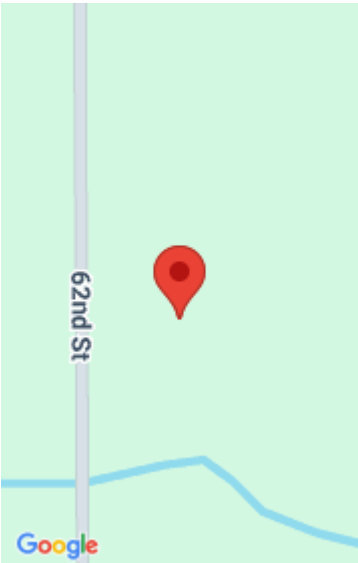
62ND STREET, SOUTH HAVEN, MI, 49090

<https://tuckerbenner.com>



Your 2.59 acre parcel at 62nd and 102nd would offer a private, tranquil setting with a creek meandering through lightly wooded terrain. It has gentle topography, making it build-ready and suitable for a custom home or retreat. With essential utilities nearby, and excellent proximity to town and shoreline amenities, it perfectly balances peaceful seclusion with [...]

- 0 baths
- Acreage
- Land
- Active



Call us now

Phone: (231)730-8781
Email: tuckerbennerteam@gmail.com
Address: 2747 Lakeshore Drive, Twin Lake, MI 49457

Basics

Category: Land

Status: Active

Lot size: 2.59 sq ft

County: Allegan

Type: Acreage

Bathrooms: 0 baths

Lot Size Acres: 2.59 acres

Amenities & Features

Utilities: None

Fees & Taxes

Tax Year: 2025

School Information

High School District: South Haven

Miscellaneous

CrossStreet: 102nd & 104th Avenues

Listing Terms: Cash, Conventional

Call us now