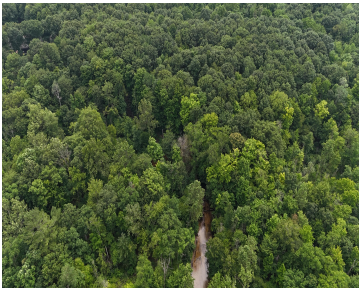


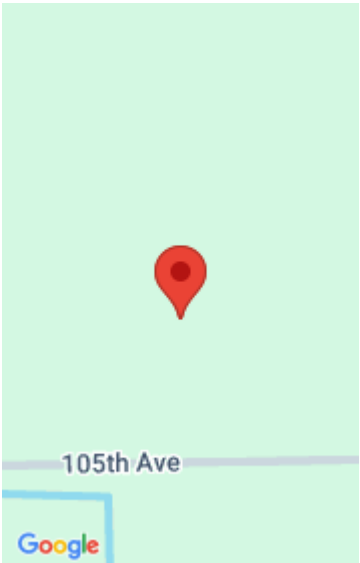
LOT B 105TH AVENUE, SOUTH HAVEN, MI, 49090

<https://tuckerbenner.com>



Discover an extraordinary retreat—12.11 acres of pristine, untouched beauty nestled along frontage on the Black River’s main branch. This breathtaking sanctuary is a true masterpiece of nature, featuring rolling ravines, dunes, serene wetlands, and a seasonal creek that gently winds its way into the riverbed. Teeming with abundant wildlife, this property is home to deer, [...]

- 0 baths
- Acreage
- Land
- Active



Call us now



Phone: (231)730-8781
Email: tuckerbennerteam@gmail.com
Address: 2747 Lakeshore Drive, Twin Lake, MI 49457



Basics

Category: Land

Status: Active

Lot size: 12.11 sq ft

County: Allegan

Type: Acreage

Bathrooms: 0 baths

Lot Size Acres: 12.11 acres

Amenities & Features

Utilities: Electricity Available, None

Waterfront Features: River

Lot Features: Ravine, Wooded

Fees & Taxes

Tax Assessed Value: \$65,366

Tax Year: 2024

Tax Annual Amount: \$2,751.77

School Information

High School District: South Haven

Miscellaneous

Road Surface Type: Unimproved

CrossStreet: In between 60th & 62nd St

Listing Terms: Cash

Call us now