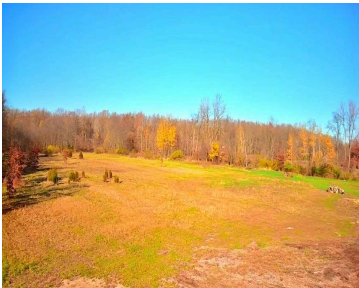
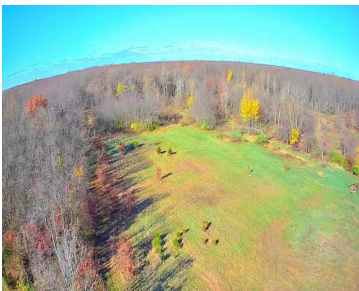
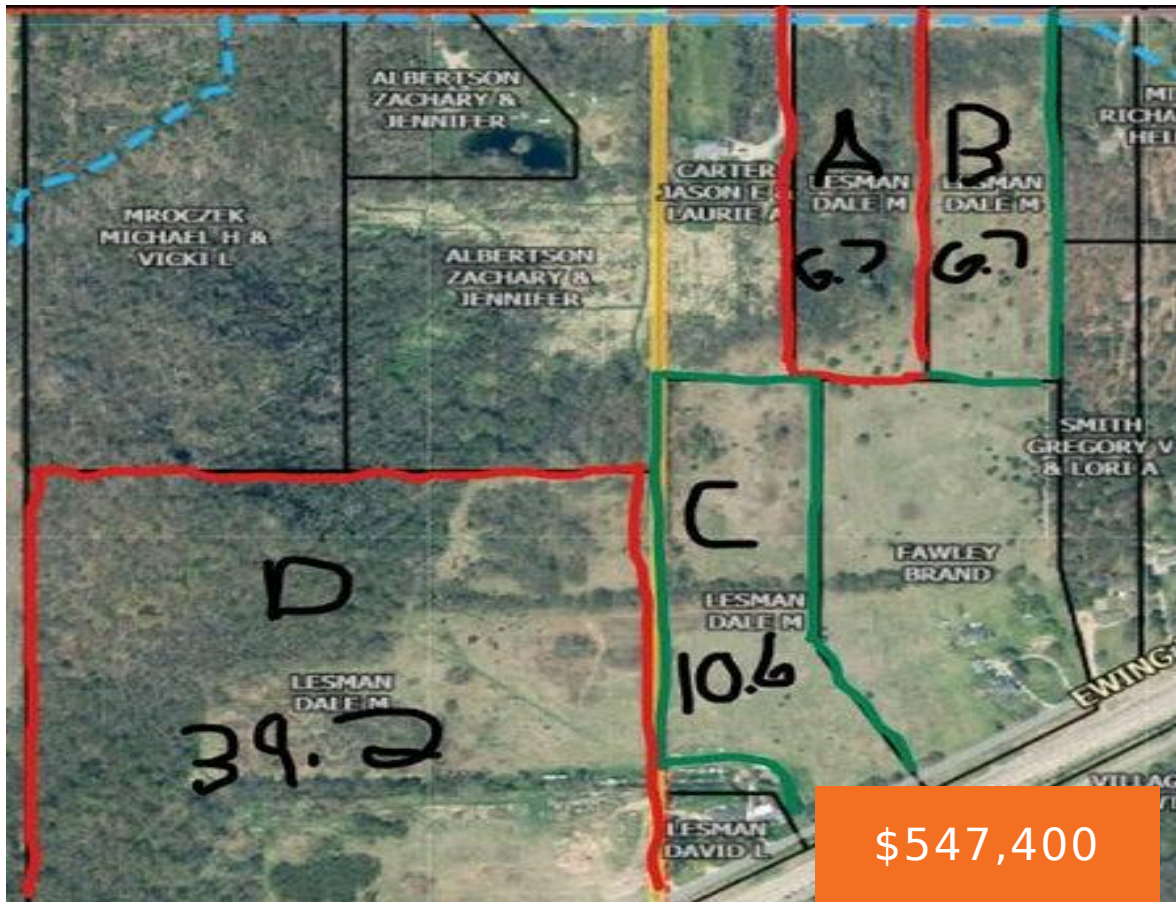


EWING RD, LAWTON, MI, 49065

<https://tuckerbenner.com>



Explore 63 Acres of Untapped Potential Across Four Unique Lots Lot A (6.6 acres): This charming parcel is perfect for a private retreat, with just the right amount of space to build a cozy homestead or create your personal haven. Lot B (6.6 acres): A mirror image of Lot A, offering another opportunity to develop [...]

- 0 baths
- Acreage
- Land
- Active



Basics

Category: Land
Status: Active
Lot size: 63 sq ft
County: Van Buren

Type: Acreage
Bathrooms: 0 baths
Lot Size Acres: 63 acres

Building Details

Current Use: Residential, Agricultural

Amenities & Features

Utilities: Water Available, Broadband, None **Lot Features:** Buildable, Cleared, Tillable

Fees & Taxes

Tax Assessed Value: \$21,533 **Tax Year:** 2024
Tax Annual Amount: \$1,812.72

School Information

High School District: Lawton

Miscellaneous

CrossStreet: Walker St **Listing Terms:** Cash, Conventional

Call us now