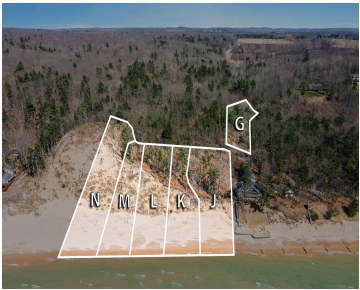


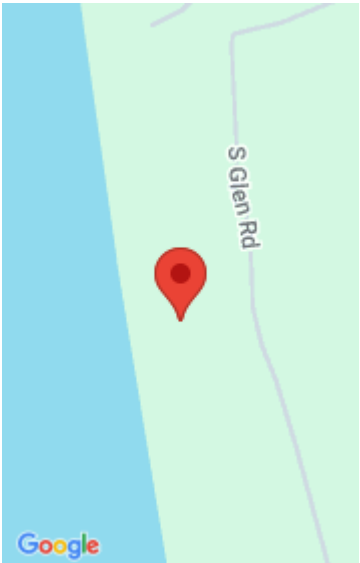
HEMLOCK, SHELBY, MI, 49455

<https://tuckerbenner.com>



An incredible opportunity to own a piece of paradise on Lake Michigan! The potential for building your dream home or vacation getaway is truly exciting. The convenience of being just minutes away from both Stony Lake and the Silver Lake Sands Dunes adds even more appeal to the property. It's a fantastic destination offering a [...]

- 0 baths
- Lot
- Land
- Active



Basics

Category: Land
Status: Active
Lot size: 0 sq ft
County: Oceana

Type: Lot
Bathrooms: 0 baths
Lot Size Acres: 0 acres

Amenities & Features

Utilities: None **Waterfront Features:** Lake

Fees & Taxes

Tax Assessed Value: \$199,893 **Tax Year:** 2022
Tax Annual Amount: \$4,170.09

School Information

High School District: Shelby

Miscellaneous

Road Surface Type: Paved **CrossStreet:** Glen Road/Woodrow Road
Listing Terms: Cash, Conventional

Call us now