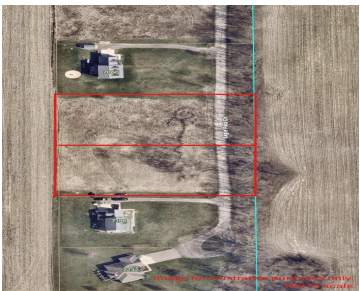
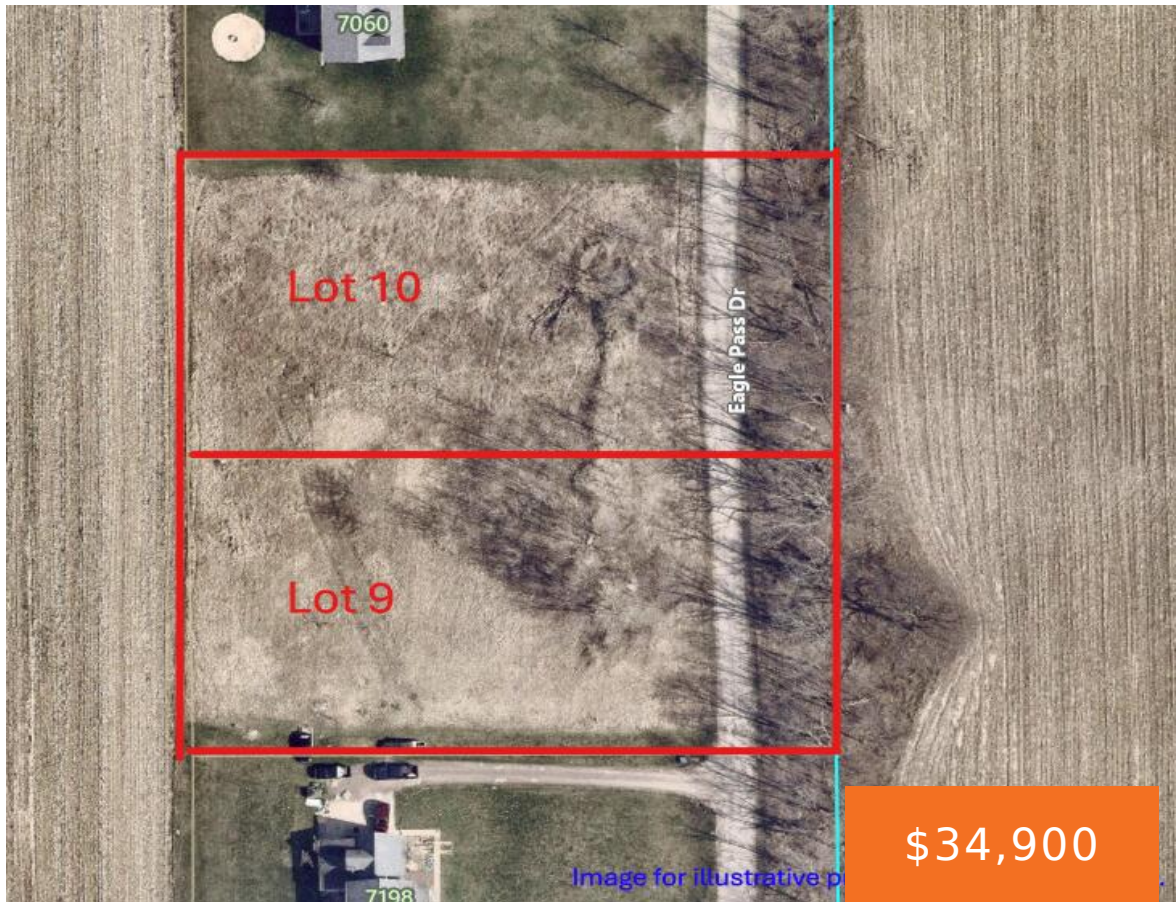


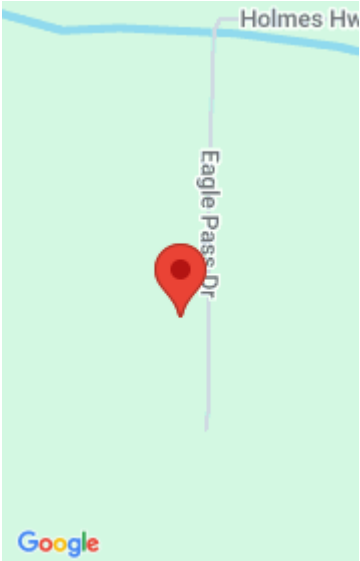
# EAGLE PASS, EATON RAPIDS, MI, 48827

<https://tuckerbenner.com>



Discover the perfect blend of peace, privacy, and convenience with these two beautiful 1-acre parcels—Lots 9 & 10 on Eagle Pass in Eaton Rapids—being sold together. Nestled in a quiet country setting at the end of a private cul-de-sac, this secluded location offers plenty of space to enjoy nature, watch wildlife, and take in stunning [...]

- 0 baths
- Acreage
- Land
- Active



## Call us now



Phone: (231)730-8781

Email: [tuckerbennerteam@gmail.com](mailto:tuckerbennerteam@gmail.com)

Address: 2747 Lakeshore Drive, Twin Lake, MI 49457



# Basics

**Category:** Land

**Status:** Active

**Lot size:** 2 sq ft

**County:** Eaton

**Type:** Acreage

**Bathrooms:** 0 baths

**Lot Size Acres:** 2 acres

# Amenities & Features

**Utilities:** Electricity Available, None

**Lot Features:** Buildable, Cul-De-Sac

# Fees & Taxes

**Tax Assessed Value:** \$19,740

**Tax Year:** 2024

**Tax Annual Amount:** \$932

# School Information

**High School District:** Eaton Rapids

# Miscellaneous

**CrossStreet:** Holmes Hwy

**Listing Terms:** Cash, Conventional

Call us now