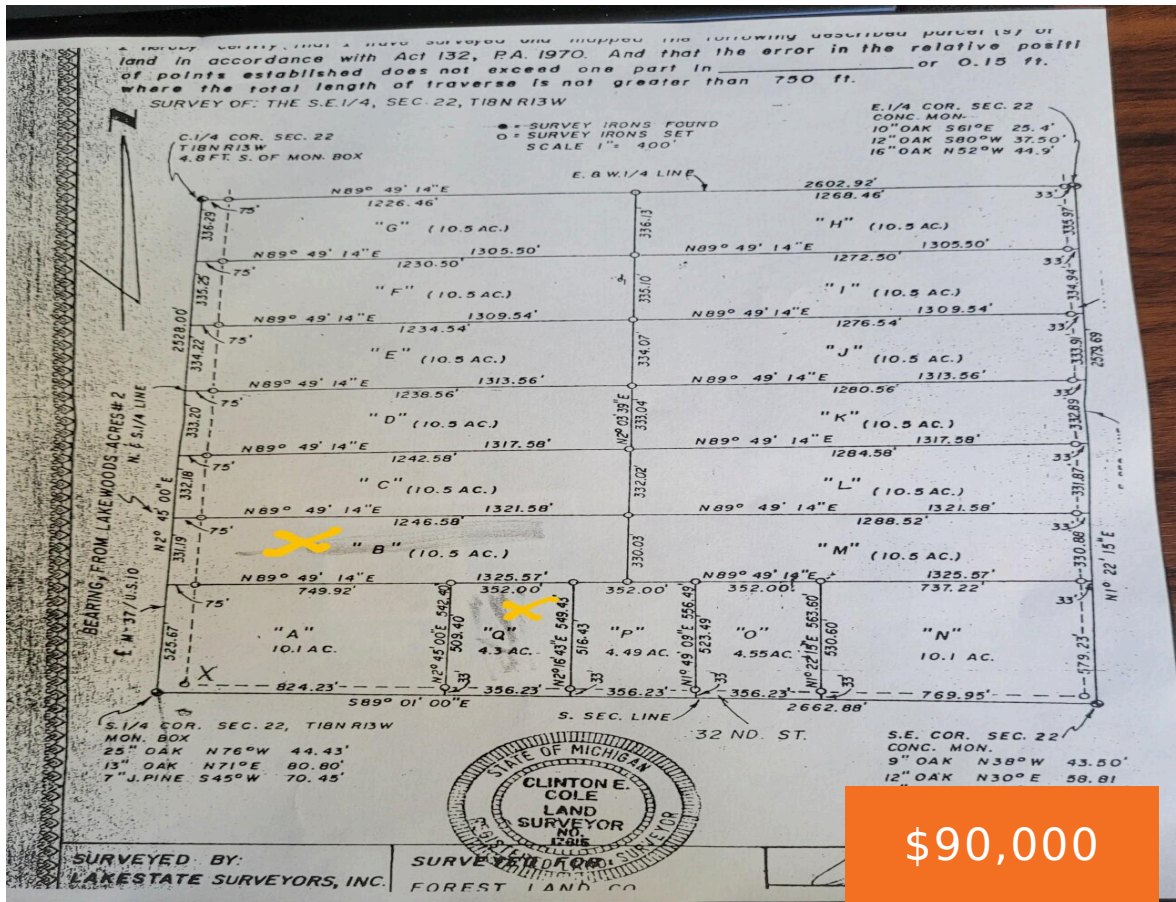


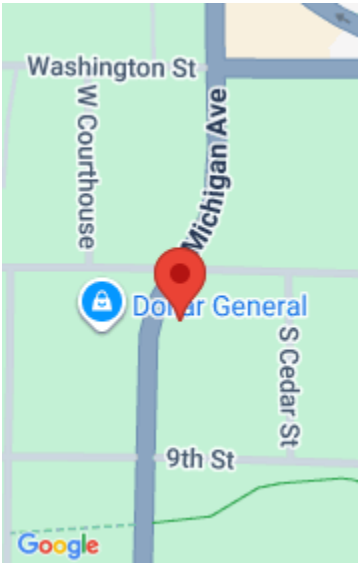
M-37, BALDWIN, MI, 49304

https://tuckerbenner.com



10.5 beautiful wooded acres just outside of Baldwin. A great opportunity to own your own slice of nature with endless possibilities. Hurry before it is gone.

- 0 baths
- Acreage
- Land
- Active



Basics

Category: Land

Status: Active

Lot size: 10.5 sq ft

County: Lake

Type: Acreage

Bathrooms: 0 baths

Lot Size Acres: 10.5 acres

Amenities & Features

Utilities: None

Fees & Taxes

Tax Assessed Value: \$14,407

Tax Annual Amount: \$171.46

Tax Year: 2025

School Information

High School District: Baldwin

Miscellaneous

CrossStreet: W 24th & W 32nd

Listing Terms: Cash, Conventional

Call us now