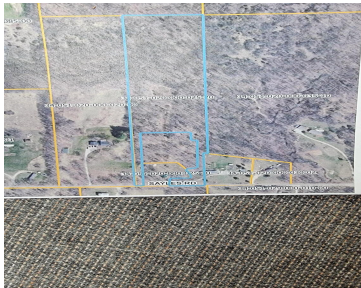


SAYLES, IONIA, MI, 48846
<https://tuckerbenner.com>



Nearly 9 Acre Wooded paradise. Awesome recreational property whether you're into to trails, atv's, or want to take advantage of one of the best hunting corridors in Ionia County. Multiple prime building sites with hilltop, ravine, and meandering creek views. Property boasts approx 20K+ market value in mature walnuts trees. Great location close to main [...]

- 0 baths
- Acreage
- Land
- Active



Basics

Category: Land

Status: Active

Lot size: 8.74 sq ft

County: Ionia

Type: Acreage

Bathrooms: 0 baths

Lot Size Acres: 8.74 acres

Building Details

Current Use: Recreational, Hunting

Amenities & Features

Utilities: None

Waterfront Features:
Stream/Creek

Lot Features: Ravine, High Bank, Buildable, Recreational, Wooded

School Information

High School District: Saranac

Miscellaneous

Road Surface Type: Unimproved

CrossStreet: Johnson, M21

Listing Terms: Cash, Conventional

Call us now



Phone: (231)730-8781

Email: tuckerbennerteam@gmail.com

Address: 2747 Lakeshore Drive, Twin Lake, MI 49457

