

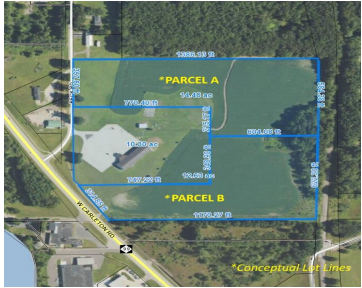
CARLETON, JONESVILLE, MI, 49250

https://tuckerbenner.com



AI RENDERING

\$1,150,000



PARCEL B: Prime 13+/- acre cleared development property strategically positioned along Michigan State Highway M-99, offering 315' +/- of frontage and flexibility in one of Hillsdale County's most active growth corridors. This land provides flexible opportunities for commercial development or re-zoned residential opportunity. The property presents multiple high-value development paths such as retail, medical, professional office, [...]

- 0 baths
- Commercial Land
- Land
- Active



Basics

Category: Land

Status: Active

Lot size: 13 sq ft

County: Hillsdale

Type: Commercial Land

Bathrooms: 0 baths

Lot Size Acres: 13 acres

Amenities & Features

Utilities: Natural Gas Available, Electricity Available, Cable Available, Phone Available, None

Lot Features: Level, Buildable, Cleared

Fees & Taxes

Tax Year: 2026

School Information

High School District: Jonesville

Miscellaneous

Road Surface Type: Paved

CrossStreet: Beck and M99

Listing Terms: Cash, Conventional

Call us now



Phone: (231)730-8781

Email: tuckerbennerteam@gmail.com

Address: 2747 Lakeshore Drive, Twin Lake, MI 49457

