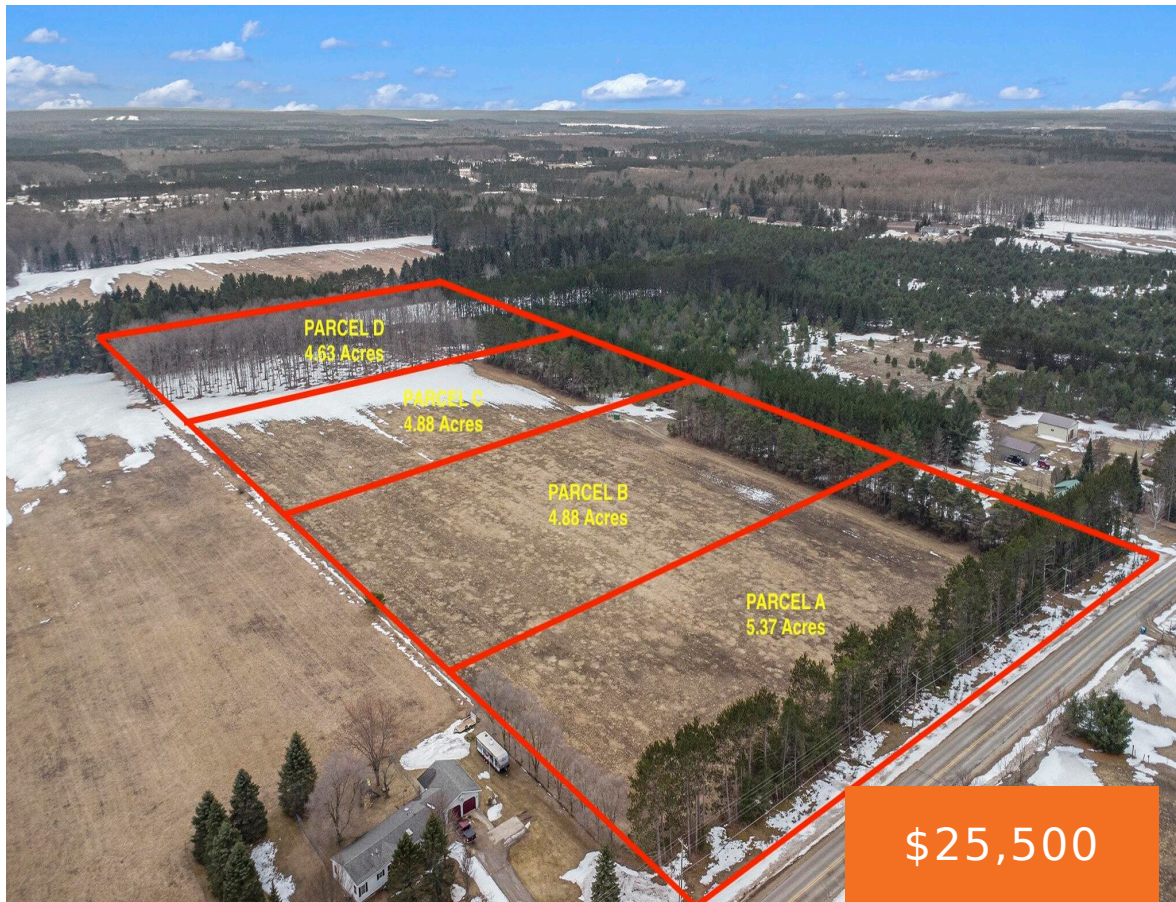


KASSUBA, GAYLORD, MI, 49735

<https://tuckerbenner.com>



Check out this prime 4.63-acre tract in Otsego County! This property offers endless potential and can suit a variety of needs — whether you’re looking for a future homesite, recreational getaway, hobby farm, or solid investment opportunity. Conveniently located just outside Gaylord and only minutes from Treetops Resort, the possibilities with this one are truly [...]

- 0 baths
- Acreage
- Land
- Active



Call us now

Phone: (231)730-8781
Email: tuckerbennerteam@gmail.com
Address: 2747 Lakeshore Drive, Twin Lake, MI 49457

Basics

Category: Land

Status: Active

Lot size: 4.63 sq ft

County: Otsego

Type: Acreage

Bathrooms: 0 baths

Lot Size Acres: 4.63 acres

Building Details

Current Use: Recreational, Agricultural

Amenities & Features

Utilities: None **Lot Features:** Buildable, Recreational, Tillable, Wooded

Fees & Taxes

Tax Assessed Value: \$14,600 **Tax Year:** 2026

School Information

High School District: Otsego

Miscellaneous

Road Surface Type: Unimproved **CrossStreet:** Kassuba Rd & Lakeclub Dr

Listing Terms: Cash, Conventional, Contract

Call us now