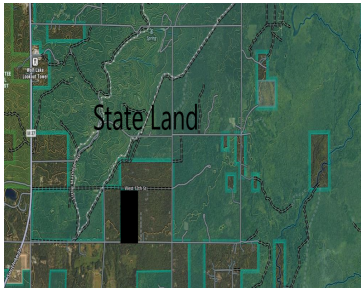


PARCEL "Q"

2.33 ACRES

\$32,900

2.33 acres with everything you need. Property is close to ORV trails, near state land, electricity is available at the road with the option to add the cost into the purchase price. These parcels are ready to fly! New land division, please see attached survey. Pictures coming soon.



- 0 baths
- Acreage
- Land
- Active



Basics

Category: Land

Status: Active

Lot size: 2.33 sq ft

County: Lake

Type: Acreage

Bathrooms: 0 baths

Lot Size Acres: 2.33 acres

Amenities & Features

Utilities: Electricity Available, None

Lot Features: Buildable, Wooded

School Information

High School District: Baldwin

Miscellaneous

Road Surface Type: Unimproved

CrossStreet: Merrillville

Listing Terms: Cash, Contract

Call us now