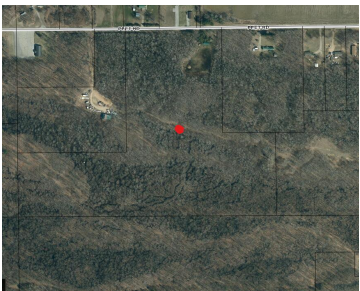
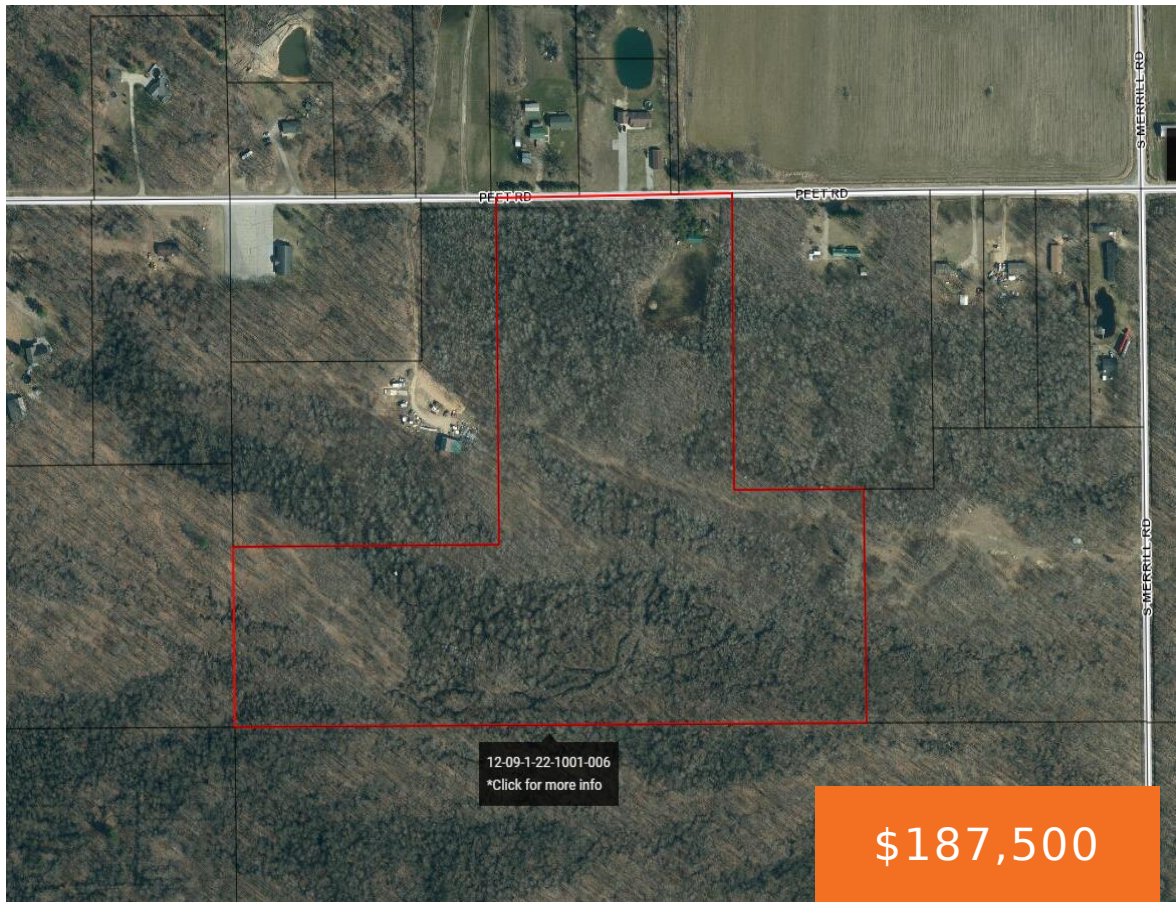


# PEET, BANNISTER, MI, 48807

<https://tuckerbenner.com>



Discover the possibilities with this 34-acre vacant parcel featuring approximately 675 feet of road frontage along Peet Road. This unique T-share property offers flexibility for your future plans—whether you’re looking to build your dream home, enjoy it as a private recreational retreat, or use it for hunting. An existing outbuilding pavilion remains on the property, [...]

- 0 baths
- Acreage
- Land
- Active



# Basics

**Category:** Land

**Status:** Active

**Lot size:** 34.14 sq ft

**County:** Saginaw

**Type:** Acreage

**Bathrooms:** 0 baths

**Lot Size Acres:** 34.14 acres

# Amenities & Features

**Utilities:** Electricity Available, None

**WaterSource:** Well

# Fees & Taxes

**Tax Assessed Value:** \$2,700

**Tax Year:** 2025

**Tax Annual Amount:** \$1,050

# School Information

**High School District:** Ovid-Elsie

# Miscellaneous

**CrossStreet:** Merrill **Listing Terms:** Cash, Rural Development, VA Loan, Conventional

Call us now