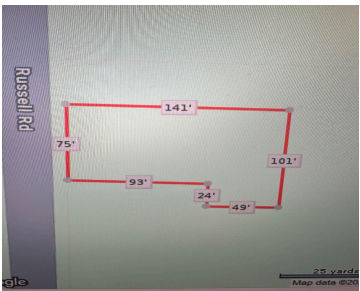
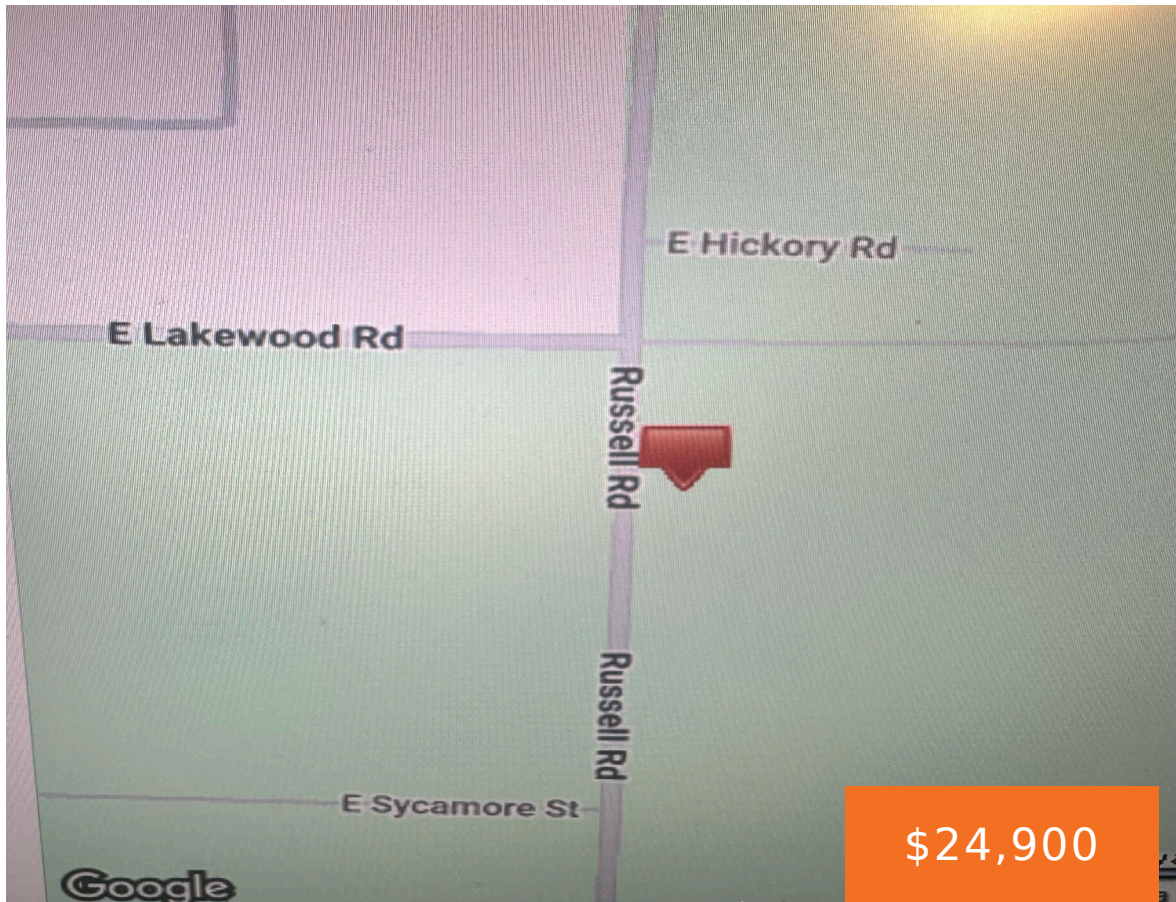


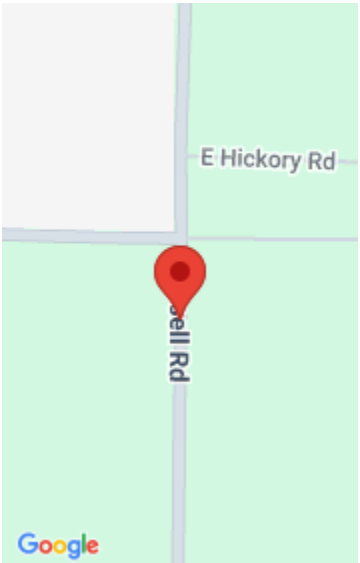
RUSSELL, TWIN LAKE, MI, 49457

<https://tuckerbenner.com>



Location, location, location!! Russell and Lakewood, nice lot and newer homes built all around, along with the fact that it's surrounded by county land, private and nicer. Buyer to verify all info.

- 0 baths
- Lot
- Land
- Active



Basics

Category: Land
Status: Active
Lot size: 0.12 sq ft
County: Muskegon

Type: Lot
Bathrooms: 0 baths
Lot Size Acres: 0.12 acres

Amenities & Features

Utilities: Electricity Available, None

Fees & Taxes

Tax Assessed Value: \$300

Tax Annual Amount: \$14

Tax Year: 2024

School Information

High School District: Whitehall

Miscellaneous

CrossStreet: E Lakewood & Sycamore

Listing Terms: Cash, Conventional

Call us now