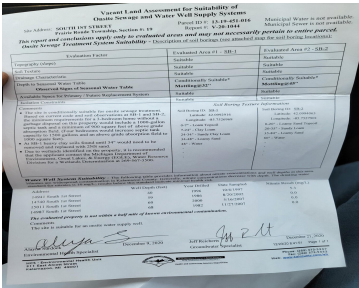
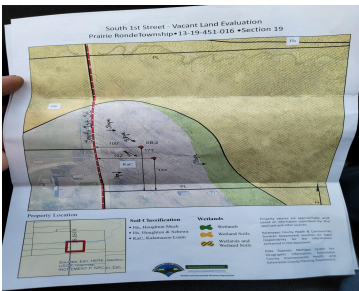


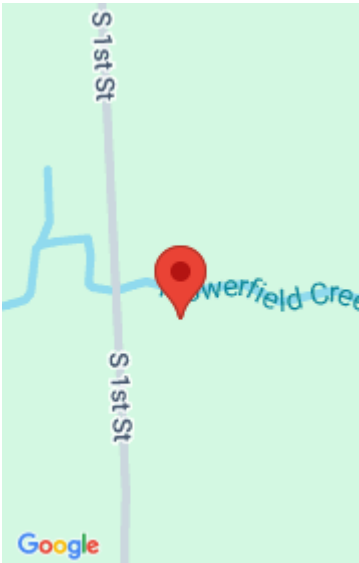
1ST, SCHOOLCRAFT, MI, 49087

<https://tuckerbenner.com>



This 14 +/- acre property in Kalamazoo County offers a great location for building your dream home, with easy access to major cities and amenities. Just minutes away from Schoolcraft, Portage, Kalamazoo, and Battle Creek, it strikes the perfect balance of quiet privacy and convenience. The land is teeming with deer and waterfowl and features [...]

- 0 baths
- Acreage
- Land
- Active



Call us now

Phone: (231)730-8781
Email: tuckerbennerteam@gmail.com
Address: 2747 Lakeshore Drive, Twin Lake, MI 49457

Basics

Category: Land
Status: Active
Lot size: 14.9 sq ft
County: Kalamazoo

Type: Acreage
Bathrooms: 0 baths
Lot Size Acres: 14.9 acres

Amenities & Features

Utilities: Electricity Available, None
Waterfront Features: Stream/Creek

Fees & Taxes

Tax Assessed Value: \$42,700
Tax Annual Amount: \$426.68
Tax Year: 2025

School Information

High School District: Schoolcraft

Miscellaneous

CrossStreet: S 1st St
Listing Terms: Cash, Conventional

Call us now