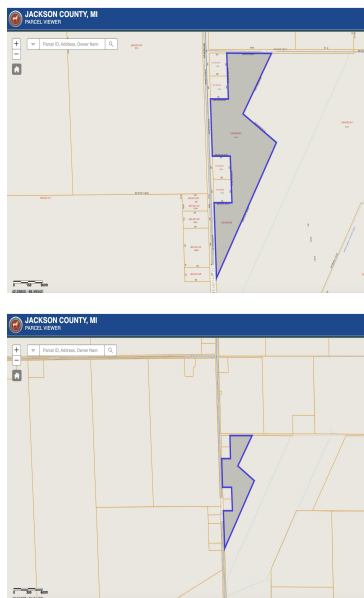
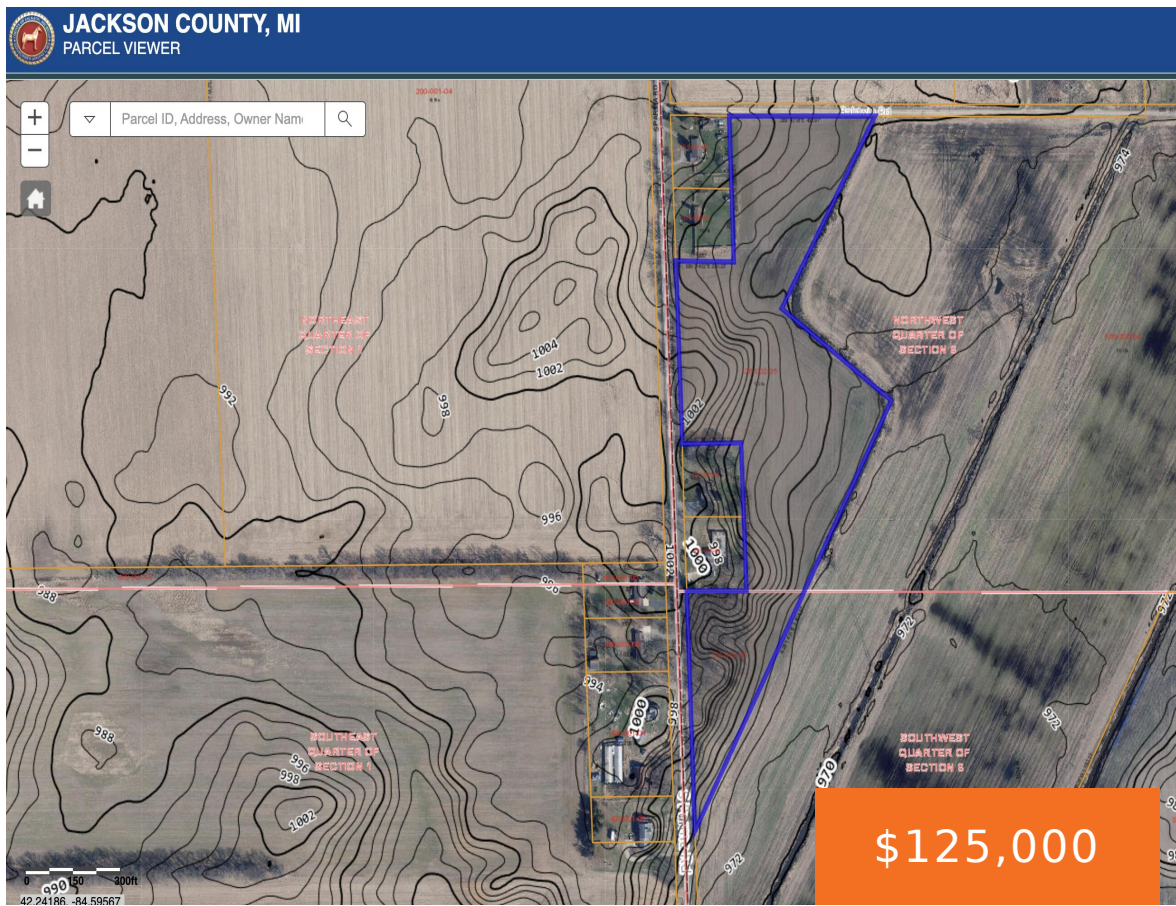


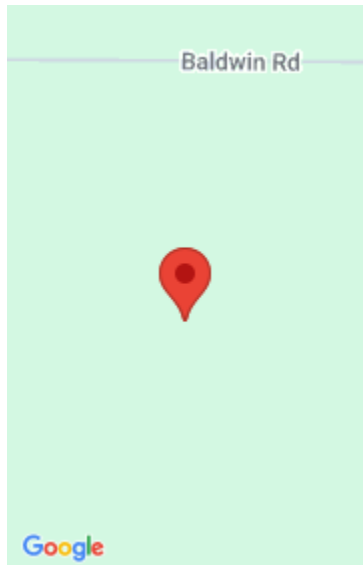
PARMA, PARMA, MI, 49269

<https://tuckerbenner.com>



15+ acres of land on South Parma Rd, has been used for farming in the past and likely buildable. Buyer’s agent to verify all information. Seller willing to sell this property or as a larger part of MLS listing 26002151 totaling 90+ acres.

- 0 baths
- Acreage
- Land
- Active



Basics

Category: Land

Status: Active

Lot size: 15.59 sq ft

County: Jackson

Type: Acreage

Bathrooms: 0 baths

Lot Size Acres: 15.59 acres

Amenities & Features

Utilities: Natural Gas Available, Electricity Available, Cable Available, None

Fees & Taxes

Tax Assessed Value: \$14,089

Tax Year: 2025

Tax Annual Amount: \$536

School Information

High School District: Western

Miscellaneous

CrossStreet: Baldwin & S Parma Rd

Listing Terms: Cash, Conventional

Call us now