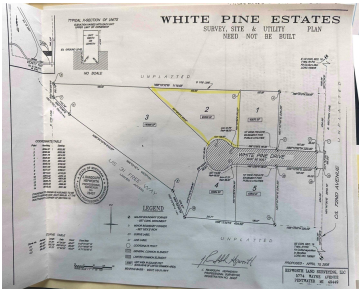


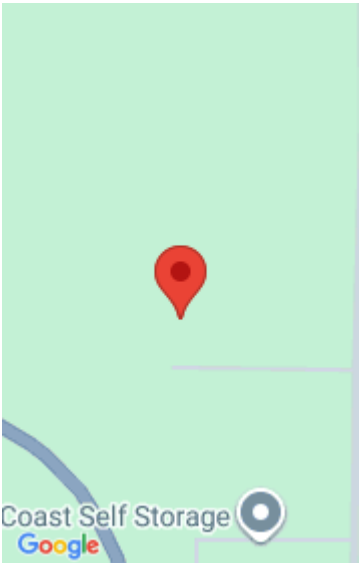
# 2, WHITE PINE, HART, MI, 49420

<https://tuckerbenner.com>



Nestled in a quiet cul-de-sac, this gorgeous 1.499 -acre wooded lot offers the perfect setting for your future home. Bring your house plans and envision life in a peaceful setting, while still being conveniently close to everything Pentwater has to offer. Enjoy easy access to the highway, making travel a breeze, and take advantage of [...]

- 0 baths
- Acreage
- Land
- Active



## Basics

**Category:** Land

**Status:** Active

**Lot size:** 1.5 sq ft

**County:** Oceana

**Type:** Acreage

**Bathrooms:** 0 baths

**Lot Size Acres:** 1.5 acres

## Building Details

**Current Use:** Residential

## Amenities & Features

**Utilities:** Electricity Available, None

**Lot Features:** Buildable, Cul-De-Sac, Wooded

## Fees & Taxes

**Tax Assessed Value:** \$3,628

**Tax Annual Amount:** \$121.95

**Tax Year:** 2024

**Association Fee Includes:** None

## School Information

**High School District:** Pentwater

## Miscellaneous

**Road Surface Type:** Paved

**CrossStreet:** 72nd Avenue

**Listing Terms:** Cash, Conventional

Call us now