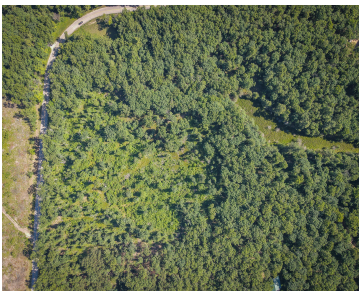


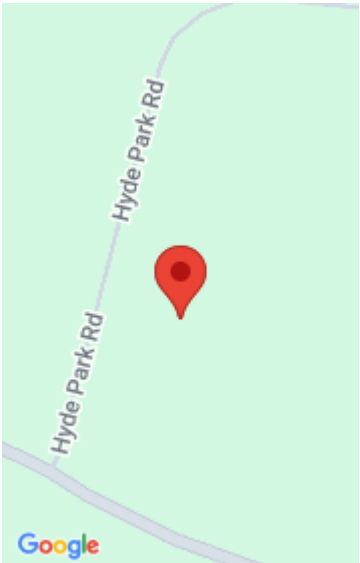
HYDE PARK, WHITEHALL, MI, 49461

<https://tuckerbenner.com>



Secluded 5.5-acre wooded retreat in Whitehall Township, Muskegon County, MI. Conveniently located just 2 miles from US 31, 3 miles from Whitehall, and 9 miles from Lake Michigan beaches. This prime parcel offers multiple building sites amidst lush forest, with paved road access and electricity ready for connection. Ideal for crafting your dream home or [...]

- 0 baths
- Acreage
- Land
- Active



Basics

Category: Land

Status: Active

Lot size: 5.5 sq ft

County: Muskegon

Type: Acreage

Bathrooms: 0 baths

Lot Size Acres: 5.5 acres

Building Details

Current Use: Residential

Amenities & Features

Utilities: Electricity Available, None

Lot Features: Level, Wooded

Fees & Taxes

Tax Year: 2025

School Information

High School District: Whitehall

Miscellaneous

Road Surface Type: Paved

CrossStreet: Holton Whitehall & Hyde Park

Listing Terms: Cash, Conventional

Call us now