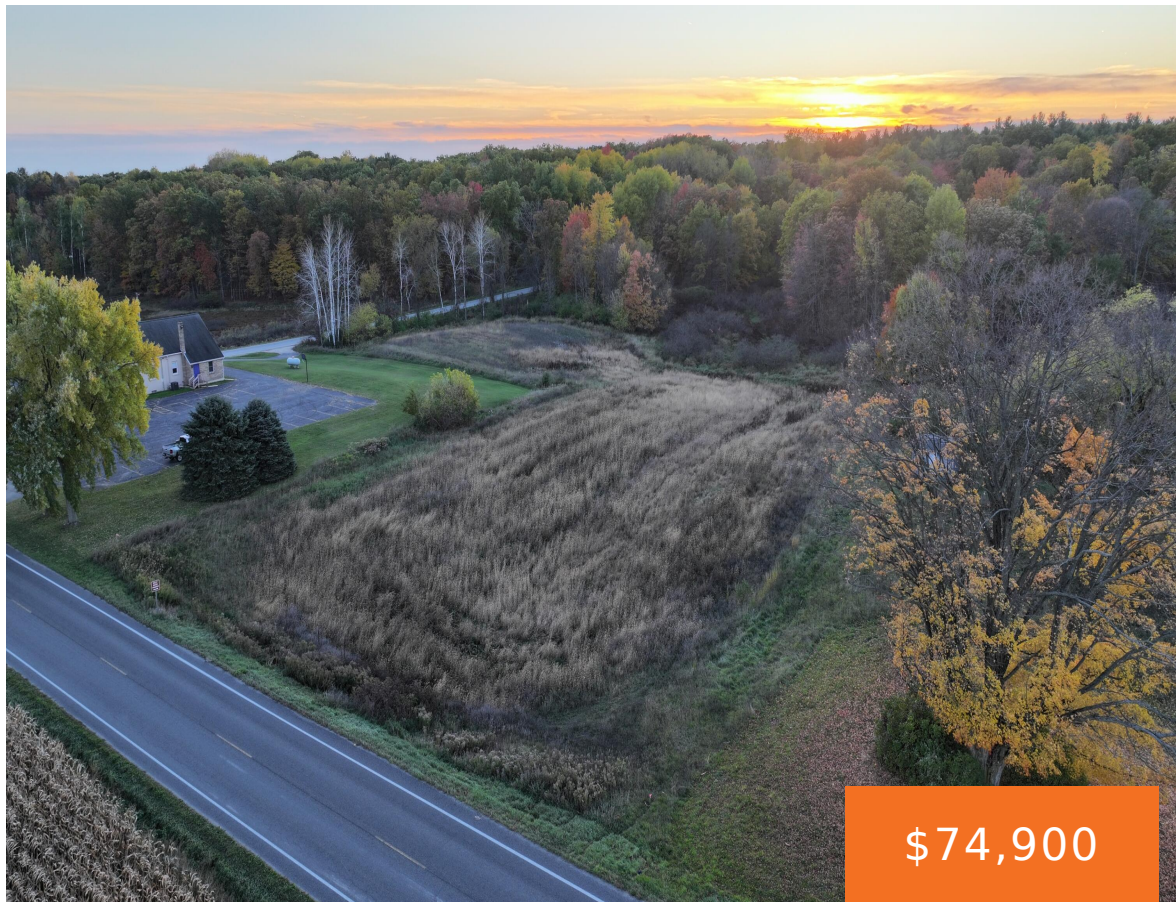


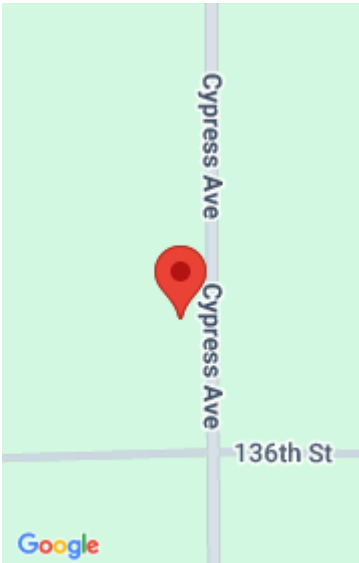
CYPRESS, SAND LAKE, MI, 49343

<https://tuckerbenner.com>



Discover 2.12 acres of open, buildable land on Cypress in Sand Lake. This parcel offers a clean, versatile landscape with gentle elevation changes, making it ideal for your custom home. The open terrain provides endless options for layout, outbuildings, gardens, and future improvements. Wildlife is abundant in the area, with deer and turkey frequently moving [...]

- 0 baths
- Lot
- Land
- Active



Call us now



Phone: (231)730-8781
Email: tuckerbennerteam@gmail.com
Address: 2747 Lakeshore Drive, Twin Lake, MI 49457



Basics

Category: Land
Status: Active
Lot size: 2.12 sq ft
County: Newaygo

Type: Lot
Bathrooms: 0 baths
Lot Size Acres: 2.12 acres

Amenities & Features

Utilities: Electricity Available, None
Lot Features: Wetland Area, Wooded

Fees & Taxes

Tax Assessed Value: \$62,142
Tax Annual Amount: \$1,429.54
Tax Year: 2025

School Information

High School District: Tri County

Miscellaneous

Road Surface Type: Paved
CrossStreet: 136th Streets
Listing Terms: Cash, Conventional

Call us now