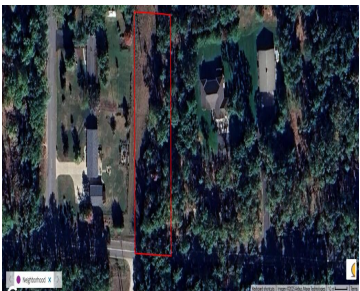


LAKEWOOD, WHITEHALL, MI, 49461

<https://tuckerbenner.com>



Wooded lot in Whitehall schools. Power is available on Paved Road. Wooded for some privacy, & easy access to town and the expressway. Bring your house plans and builder and get started.

- 0 baths
- Lot
- Land
- Active



Basics

Category: Land	Type: Lot
Status: Active	Bathrooms: 0 baths
Lot size: 0.77 sq ft	Lot Size Acres: 0.77 acres
County: Muskegon	

Call us now

Building Details

Current Use: Residential

Amenities & Features

Utilities: Phone Available, Broadband, None

Lot Features: Level, Buildable, Wooded

Fees & Taxes

Tax Assessed Value: \$2,371

Tax Year: 24

Tax Annual Amount: \$109

School Information

High School District: Whitehall

Miscellaneous

Road Surface Type: Paved

CrossStreet: Blank and Whitehall

Listing Terms: Cash, Conventional

Call us now