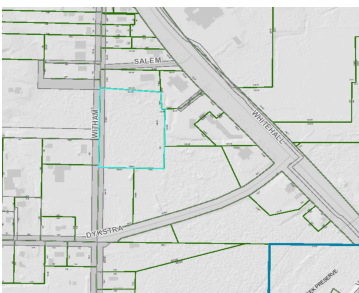


WITHAM, MUSKEGON, MI, 49445

<https://tuckerbenner.com>



4.13 Acres of Vacant Land Zoned C-1 on Witham Rd! Across from the North Muskegon VFW and behind Goodwill, Northside Motel, and Huntington, this location is zoned C-1 (Neighborhood Commercial District) for "retail business and service establishments which serve the day-to-day requirements of nearby residential areas, and to provide for mixed uses in designated areas." [...]

- 0 baths
- Commercial Land
- Land
- Active



Call us now

Basics

Category: Land

Status: Active

Lot size: 4.13 sq ft

County: Muskegon

Type: Commercial Land

Bathrooms: 0 baths

Lot Size Acres: 4.13 acres

Building Details

Sewer: Public Sewer

Amenities & Features

Utilities: Natural Gas Available, Electricity Available, Cable Available, Phone Available, Storm Sewer, None

WaterSource: Public

Lot Features: Buildable

Fees & Taxes

Tax Assessed Value: \$26,100

Tax Year: 2025

Tax Annual Amount: \$1,233

School Information

High School District: Reeths-Puffer

Miscellaneous

Call us now

Road Surface Type: Paved

CrossStreet: Dykstra & Salem

Listing Terms: Cash, Conventional

Call us now



Phone: (231)730-8781
Email: tuckerbennerteam@gmail.com
Address: 2747 Lakeshore Drive, Twin Lake, MI 49457

