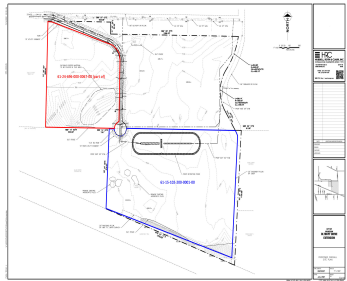


OLTHOFF, MUSKEGON, MI, 49444

<https://tuckerbenner.com>



Industrial land available within the City of Muskegon’s Port City Industrial Park. The city of Muskegon recently expanded the park to include an additional 60 acres (+/-). Approximately 38 acres remains available. Currently, a 28-acre parcel and 10-acre parcel are listed. The City is aggressively seeking manufacturers or developers. Prominent manufacturers within the park include [...]

- 0 baths
- Industrial Land
- Land
- Active



Basics

Category: Land

Status: Active

Lot size: 28 sq ft

County: Muskegon

Type: Industrial Land

Bathrooms: 0 baths

Lot Size Acres: 28 acres



Call us now

Phone: (231)730-8781
 Email: tuckerbennerteam@gmail.com
 Address: 2747 Lakeshore Drive, Twin Lake, MI 49457



Amenities & Features

Utilities: None Connected, Storm Sewer Available, Public Water Available, Public Sewer Available, Natural Gas Available, Electric Available

Fees & Taxes

Tax Assessed Value: \$1

Tax Year: 2022

Tax Annual Amount: \$1

School Information

High School District: Fruitport

Miscellaneous

CrossStreet: Sherman & Latimer

Listing Terms: Cash, Conventional



Call us now

Phone: (231)730-8781

Email: tuckerbennerteam@gmail.com

Address: 2747 Lakeshore Drive, Twin Lake, MI 49457

