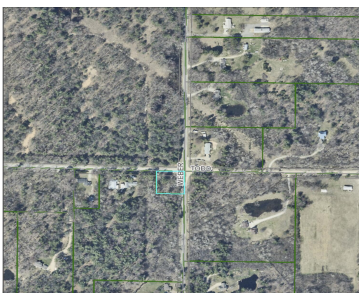


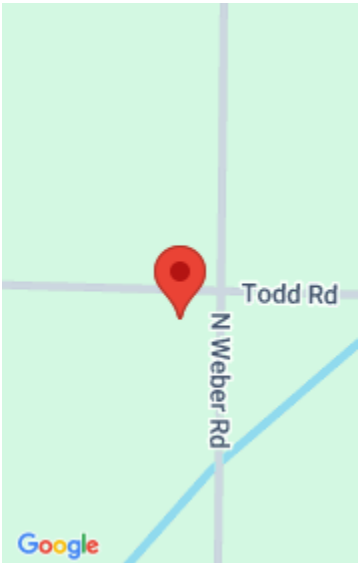
# TODD, WHITEHALL, MI, 49461

<https://tuckerbenner.com>



Beautiful wooded corner lot with mature trees and great road access just waiting for your building vision! Additional photo's coming soon!

- 0 baths
- Acreage
- Land
- Active



## Basics

**Category:** Land

**Status:** Active

**Lot size:** 0.64 sq ft

**County:** Muskegon

**Type:** Acreage

**Bathrooms:** 0 baths

**Lot Size Acres:** 0.64 acres

## Amenities & Features

**Utilities:** None

**Lot Features:** Buildable, Wooded, Corner Lot

## Fees & Taxes

**Tax Assessed Value:** \$4,000

**Tax Year:** 2025

**Tax Annual Amount:** \$21

## School Information

**High School District:** Reeths-Puffer

## Miscellaneous

**CrossStreet:** Todd & Weber

**Listing Terms:** Cash, Conventional

Call us now