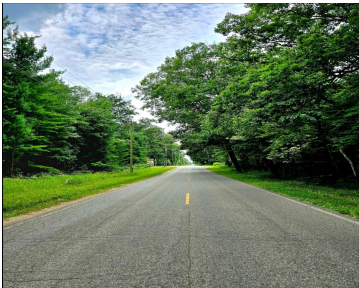
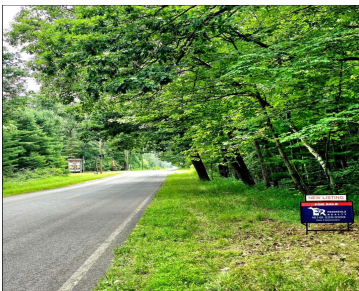
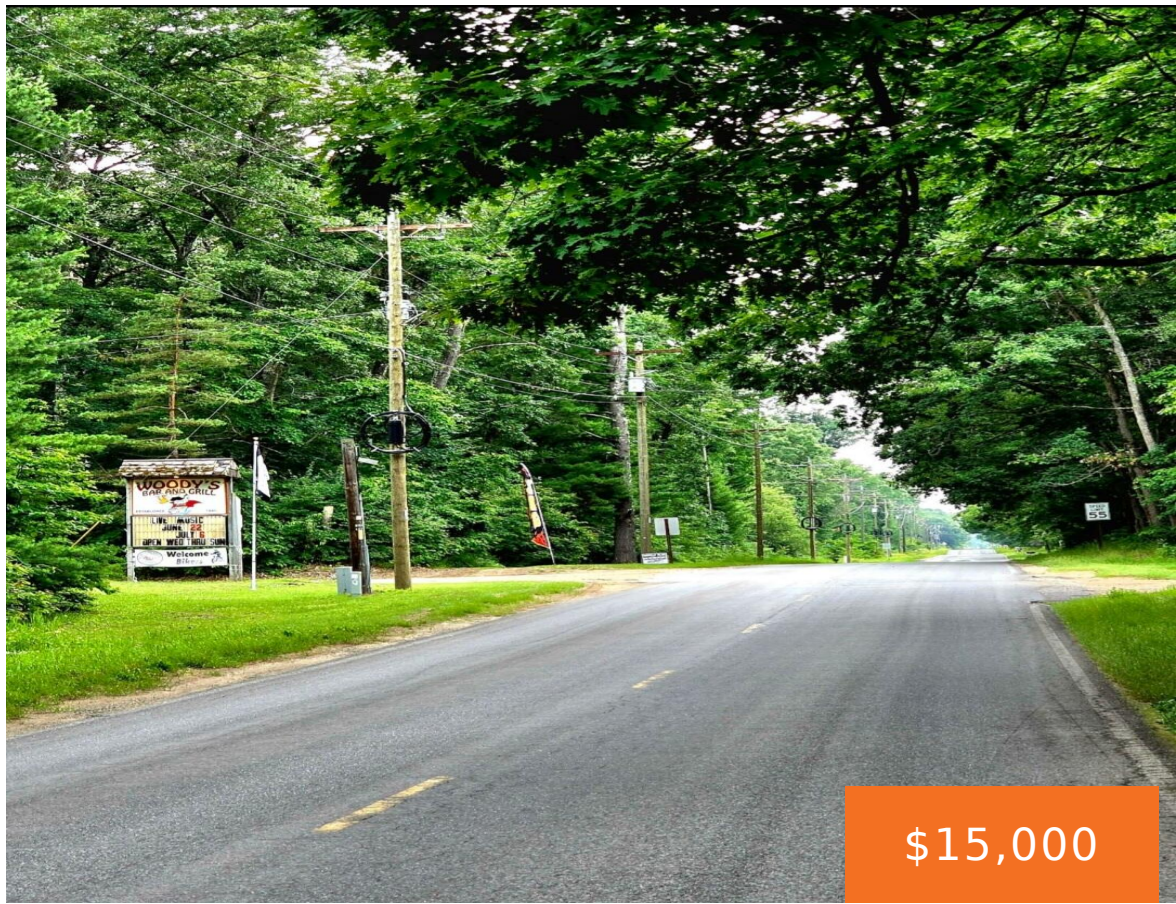


11 MILE, BITELY, MI, 49309

<https://tuckerbenner.com>



Wooded/buildable parcel just down the street from Woody’s Bar & Grill and a stone’s throw from Woodland Lake. Lot is level and full of mature trees. Power is available at the street. Located in an area known for it’s recreational opportunities and vast expanses of Manistee National Forest. Baldwin and the fabled Pere Marquette River [...]

- 0 baths
- Lot
- Land
- Active



Basics

Category: Land

Status: Active

Lot size: 0.45 sq ft

County: Newaygo

Type: Lot

Bathrooms: 0 baths

Lot Size Acres: 0.45 acres

Amenities & Features

Utilities: None

Lot Features: Level, Buildable, Wooded

Fees & Taxes

Tax Assessed Value: \$1,207

Tax Year: 2024

Tax Annual Amount: \$87.28

School Information

High School District: Baldwin

Miscellaneous

CrossStreet: Just east of Woody's on 11mile

Listing Terms: Cash, Conventional

Call us now