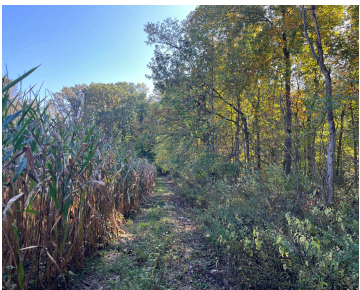


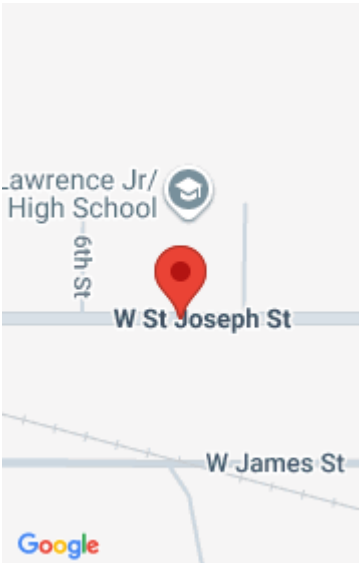
ST JOSEPH, LAWRENCE, MI, 49064

<https://tuckerbenner.com>



This 18-acre property offers a unique opportunity for those looking to build their dream home or enjoy a private hunting retreat. Conveniently located just outside of downtown Lawrence, this land provides the perfect blend of seclusion and accessibility. Enjoy the beauty of Southwest Michigan, with many inland lakes nearby and just 20 miles to Lake Michigan [...]

- 0 baths
- Acreage
- Land
- Active



Basics

Category: Land

Status: Active

Lot size: 18.66 sq ft

County: Van Buren

Type: Acreage

Bathrooms: 0 baths

Lot Size Acres: 18.66 acres

Amenities & Features

Utilities: None

Fees & Taxes

Tax Assessed Value: \$12,386

Tax Annual Amount: \$671

Tax Year: 2024

School Information

High School District: Lawrence

Miscellaneous

CrossStreet: 54th St and Michigan St

Listing Terms: Cash, Conventional

Call us now